

Product datasheet for **TA392702M**

Apolipoprotein A I (APOA1) Rabbit Polyclonal Antibody

Product data:

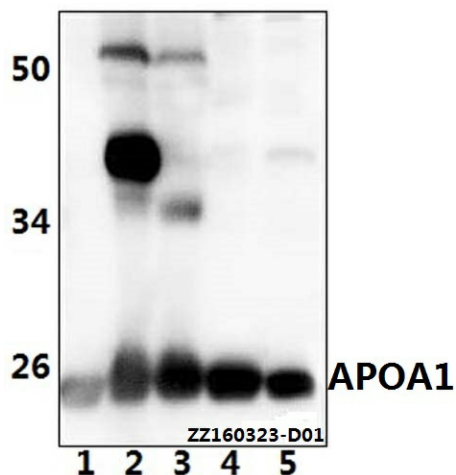
Product Type:	Primary Antibodies
Applications:	WB
Recommended Dilution:	WB:1:500~1:1000 IHC:1:50~1:200
Reactivity:	Human, Mouse, Rat
Host:	Rabbit
Isotype:	IgG
Clonality:	Polyclonal
Immunogen:	Recombinant full length Human APOA1.
Specificity:	APOA1 polyclonal antibody detects endogenous levels of APOA1 protein.
Formulation:	Rabbit IgG, 1mg/ml in PBS with 0.02% sodium azide, 50% glycerol, pH7.2
Concentration:	1mg/ml
Conjugation:	Unconjugated
Storage:	Store at 4°C short term. Aliquot and store at -20°C long term. Avoid freeze-thaw cycles.
Stability:	1 year
Predicted Protein Size:	~ 29 kDa
Gene Name:	apolipoprotein A1
Database Link:	Entrez Gene 335 Human P02647
Background:	<p>The human apoA-I gene encodes a single chain, 243 amino acid protein which promotes cholesterol efflux from tissues to the liver for excretion. Apolipoprotein A-I is the major protein component of high density lipoprotein (HDL) in the plasma. It can function as a cofactor for lecithin cholesterolacyltransferase (LCAT), which is responsible for the formation of most plasma cholesteryl esters. The human apoA-II gene encodes the second most abundant protein of HDL particles, where it influences plasma levels of free fatty acids (FFA). The human apoA-IV gene encodes a 396 amino acid preprotein, which after proteolytic processing is secreted from the intestine in association with chylomicron particles.</p>

[View online »](#)

Synonyms: Apo-AI; ApoA-I; APOA1; APOA1/APOC3 fusion gene; Apo AI; ApoA I; Apolipoprotein A-I(1-242); Apolipoprotein A1; ApolipoproteinAI; Apolipoprotein AI; Apolipoprotein A I precursor; Apolipoprotein of high density lipoprotein; Brp14; Ltw1; Lvtw1; MGC117399; Sep1; Sep2

Note: For research use only, not for use in diagnostic procedure.

Product images:



Western blot (WB) analysis of APOA1 polyclonal antibody at 1:500 dilution Lane1:THP-1 whole cell lysate(40ug) Lane2:The liver tissue lysate of Mouse(40ug) Lane3:The liver tissue lysate of Rat(40ug) Lane4:L02 whole cell lysate(40ug) Lane5:AML-12 whole cell lysate(40ug)