

Product datasheet for **TA392700**

MUC20 Rabbit Polyclonal Antibody

Product data:

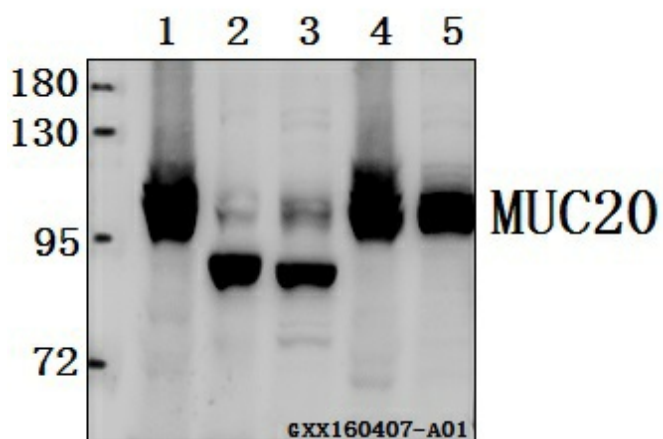
Product Type:	Primary Antibodies
Applications:	WB
Recommended Dilution:	WB: 1:500~1:1000 IHC: 1:50~1:200
Reactivity:	Human, Mouse, Rat
Host:	Rabbit
Isotype:	IgG
Clonality:	Polyclonal
Immunogen:	Recombinant full length Human MUC20.
Specificity:	MUC20 polyclonal antibody detects endogenous levels of MUC20 protein.
Formulation:	Rabbit IgG, 1mg/ml in PBS with 0.02% sodium azide, 50% glycerol, pH7.2
Concentration:	1mg/ml
Conjugation:	Unconjugated
Storage:	Store at 4°C short term. Aliquot and store at -20°C long term. Avoid freeze-thaw cycles.
Stability:	1 year
Predicted Protein Size:	~ 100 kDa
Gene Name:	mucin 20, cell surface associated
Database Link:	Entrez Gene 200958 Human Q8N307
Background:	Mucins are a family of high molecular weight, heavily glycosylated proteins (glycoconjugates) produced by epithelial tissues in most organisms of Kingdom Animalia. Mucins' key characteristic is their ability to form gels; therefore they are a key component in most gel-like secretions, serving functions from lubrication to cell signalling to forming chemical barriers. They often take an inhibitory role. Some mucins are associated with controlling mineralization, including nacre formation in mollusks, calcification in echinoderms and bone formation in vertebrates. They bind to pathogens as part of the immune system. Overexpression of the mucin proteins, especially MUC1, is associated with many types of cancer.
Synonyms:	MUC20; Mucin-20



[View online »](#)

Note: For research use only, not for use in diagnostic procedure.

Product images:



Western blot (WB) analysis of MUC20 polyclonal antibody at 1:500 dilution Lane1:HEK293T whole cell lysate(40ug) Lane2:The kidney tissue lysate of Mouse(40ug) Lane3:The kidney tissue lysate of Rat(40ug) Lane4:A549 whole cell lysate(40ug) Lane5:L02 whole cell lysate(40ug)