

## Product datasheet for **TA392698**

### Actin Regulatory Protein CAPG (CAPG) Rabbit Polyclonal Antibody

#### Product data:

Product Type:	Primary Antibodies
Applications:	WB
Recommended Dilution:	WB: 1:500~1:1000 IHC: 1:50~1:200
Reactivity:	Human, Mouse, Rat
Host:	Rabbit
Isotype:	IgG
Clonality:	Polyclonal
Immunogen:	Recombinant fragment corresponding to a region within amino acids 62-349 of Human CAPG.
Specificity:	CAPG polyclonal antibody detects endogenous levels of CAPG protein.
Formulation:	Rabbit IgG, 1mg/ml in PBS with 0.02% sodium azide, 50% glycerol, pH7.2
Concentration:	1mg/ml
Conjugation:	Unconjugated
Storage:	Store at 4°C short term. Aliquot and store at -20°C long term. Avoid freeze-thaw cycles.
Stability:	1 year
Predicted Protein Size:	~ 43 kDa
Gene Name:	capping actin protein, gelsolin like
Database Link:	<a href="#">Entrez Gene 822 Human P40121</a>



[View online »](#)

**Background:**

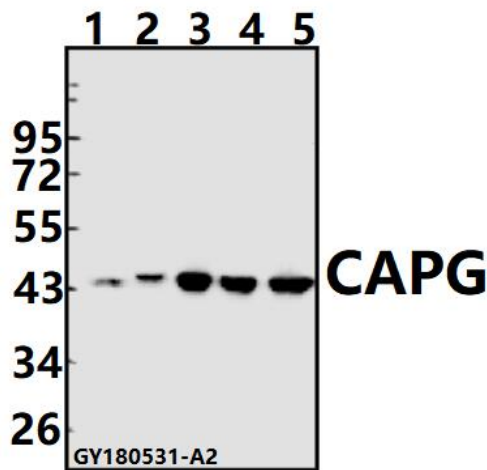
Caldesmon, Filamin 1, Nebulin, Plastin, ADF, Gelsolin, CapG, Dematin and Cofilin are differentially expressed Actin-binding proteins. Both muscular (CDh) and non-muscular (CD1) forms of Caldesmon bind to Actin as well as to Calmodulin and Myosin. CDh is expressed predominantly on thin filaments in smooth muscle, whereas CD1 is widely expressed in non-muscle tissues and cells. CapG, also designated Actin-regulatory protein and macrophage-capping protein, is a macrophage-specific protein that reversibly blocks the barbed ends of Actin filaments, but does not sever preformed ones. The interactions of CapG with Actin may be important in the regulation of nuclear and cytoplasmic structures. CapG is a calcium-sensitive DNA-binding protein that plays a role in macrophage function. It is expressed in macrophages and macrophage-like cells and can localize both to the nucleus and the cytoplasm.

**Synonyms:**

Actin regulatory protein CAP-G; AFCP, MCP; CAPG; Macrophage-capping protein

**Note:**

For research use only, not for use in diagnostic procedure.

**Product images:**

Western blot (WB) analysis of CAPG pAb at 1:500 dilution Lane1:The Lung tissue lysate of Mouse(40ug) Lane2:The Lung tissue lysate of Rat(40ug) Lane3:A549 whole cell lysate(40ug) Lane4:H1792 whole cell lysate(40ug) Lane5:A375 whole cell lysate(40ug)