

## Product datasheet for **TA392697S**

### GGPS1 Rabbit Polyclonal Antibody

#### Product data:

Product Type:	Primary Antibodies
Applications:	WB
Recommended Dilution:	WB: 1:500~1:1000 IHC: 1:50~1:200
Reactivity:	Human, Mouse, Rat
Host:	Rabbit
Isotype:	IgG
Clonality:	Polyclonal
Immunogen:	Recombinant fragment corresponding to a region within amino acids 1-295 of Human GGPS1.
Specificity:	GGPS1 polyclonal antibody detects endogenous levels of GGPS1 protein.
Formulation:	Rabbit IgG, 1mg/ml in PBS with 0.02% sodium azide, 50% glycerol, pH7.2
Concentration:	1mg/ml
Conjugation:	Unconjugated
Storage:	Store at 4°C short term. Aliquot and store at -20°C long term. Avoid freeze-thaw cycles.
Stability:	1 year
Predicted Protein Size:	~ 35 kDa
Gene Name:	geranylgeranyl diphosphate synthase 1
Database Link:	<a href="#">Entrez Gene 9453 Human O95749</a>

**Background:** GGPS1 (geranylgeranyl diphosphate synthase 1), also known as GGPPS, GGPPSase (geranylgeranyl pyrophosphate synthetase) or GGPPS1, is a member of the FPP/GGPP synthetase family of trans-prenyltransferases. Predominantly expressed in testis, heart and skeletal muscle, GGPS1 localizes to the cytoplasm and catalyzes the formation of geranylgeranyl pyrophosphate (GGPP), a precursor of geranylgeranylated proteins and carotenoids. GGPP is a major isoprenoid responsible for the C20-prenylation of proteins and the regulation of the nuclear hormone receptor LXR $\alpha$ . More specifically, GGPS1 functions as an oligomeric molecule and mediates the condensation of farnesyl diphosphate (FPP) with isopentenyl diphosphate to yield GGPP. GGPS1 contains five amino acid motifs that are conserved in trans-prenyltransferases and three potential N-glycosylation sites.

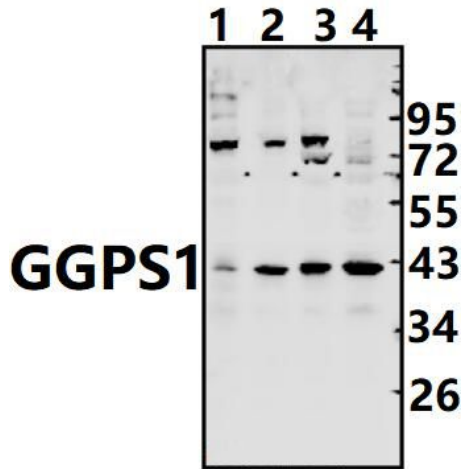


[View online >](#)

**Synonyms:** (2E,6E)-farnesyl diphosphate synthase; Dimethylallyltranstransferase; Farnesyl diphosphate synthase; Farnesyltranstransferase; Geranylgeranyl diphosphate synthase; Geranylgeranyl pyrophosphate synthase; Geranyltranstransferase; GGPPSase; GGPP synthase; GGPS1

**Note:** For research use only, not for use in diagnostic procedure.

**Product images:**



Western blot (WB) analysis of GGPS1 pAb at 1:500 dilution Lane1:C6 whole cell lysate(40ug) Lane2:3T3-L1 whole cell lysate(40ug) Lane3:A375 whole cell lysate(40ug) Lane4:K562 whole cell lysate(40ug)