

## Product datasheet for TA392695

### Rabbit Polyclonal Antibody

#### Product data:

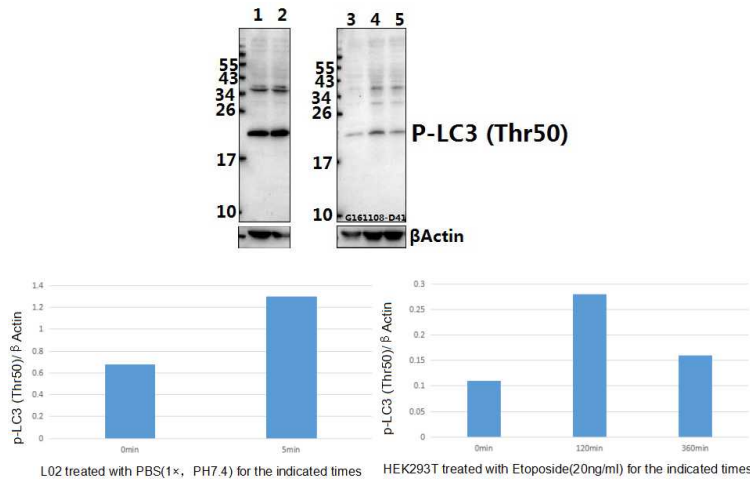
Product Type:	Primary Antibodies
Applications:	WB
Recommended Dilution:	WB: 1:500~1:1000
Reactivity:	Human, Mouse, Rat
Host:	Rabbit
Isotype:	IgG
Clonality:	Polyclonal
Immunogen:	Synthetic phosphopeptide derived from human LC3 around the phosphorylation site of Threonine 50.
Specificity:	LC3 (phospho-Thr50) polyclonal antibody detects endogenous levels of LC3A and LC3B protein only when phosphorylated at Thr50. This antibody also recognizes LC3C when phosphorylated at the corresponding residues.
Formulation:	Rabbit IgG, 1mg/ml in PBS with 0.02% sodium azide, 50% glycerol, pH7.2
Concentration:	1mg/ml
Conjugation:	Unconjugated
Storage:	Store at 4°C short term. Aliquot and store at -20°C long term. Avoid freeze-thaw cycles.
Stability:	1 year
Predicted Protein Size:	~ 15 kDa
Database Link:	<a href="#">Q9GZQ8/Q9H492/Q9BXW4</a>
Background:	Two forms of LC3 $\beta$ , the cytosolic LC3-I and the membrane-bound LC3-II, are produced post-translationally. LC3-I is formed by the removal of the C-terminal 22 amino acids from newly synthesized LC3 $\beta$ , followed by the conversion of a fraction of LC3-I into LC3-II. LC3 enhances fibronectin mRNA translation in ductus arteriosus cells through association with 60S ribosomes and binding to an AU-rich element in the 3' untranslated region of fibronectin mRNA. This facilitates sorting of fibronectin mRNA onto rough endoplasmic reticulum and translation. MAP LC3 $\beta$ may also be involved in formation of autophagosomal vacuoles. It is expressed primarily in heart, testis, brain and skeletal muscle.


[View online »](#)

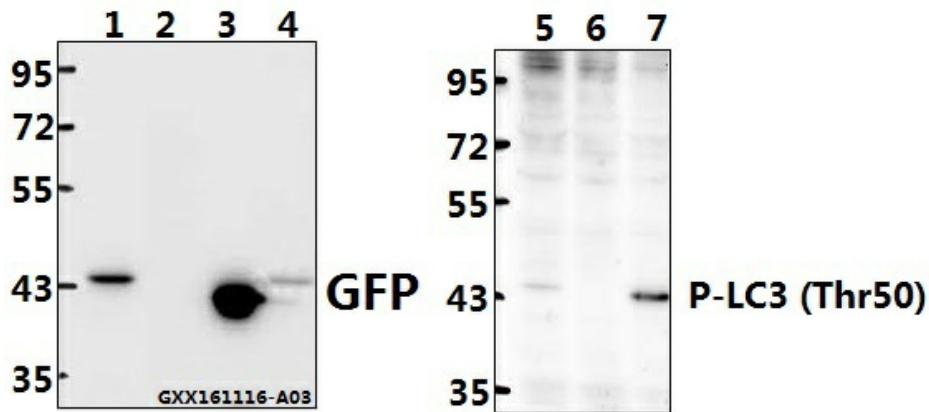
**Synonyms:** LC3-I; LC3-II; LC3I; LC3II; MAP1ALC3; MAP1LC3A; MAP1LC3B; Microtubule-associated protein 1 light chain 3 beta

**Note:** For research use only, not for use in diagnostic procedure.

## Product images:



Western blot (WB) analysis of LC3 (phospho-Thr50) polyclonal antibody at 1:500 dilution. Lane 1: L02 whole cell lysate (40ug). Lane 2: L02 treated with PBS (1xPBS, pH 7.4) for 1 hour whole cell lysate (40ug). Lane 3: HEK293T whole cell lysate (40ug). Lane 4: HEK293T treated with Etoposide (20ng/ml) for 30 minutes whole cell lysate (40ug). Lane 5: HEK293T treated with Etoposide (20ng/ml) for 6 hours whole cell lysate (40ug).



Western blot (WB) analysis of LC3 (Phospho-Thr50) pAb at 1:500 dilution. Lane 1: HEK293T transfected with pEGFP-C3-LC3A whole cell lysate (10ug). Lane 2: HEK293T whole cell lysate (40ug). Lane 3: GFP protein (100ng). Lane 4: HEK293T transfected with pEGFP-C3-LC3B whole cell lysate (10ug). Lane 5: HEK293T transfected with pEGFP-C3-LC3B whole cell lysate (10ug). Lane 6: HEK293T whole cell lysate (40ug). Lane 7: HEK293T transfected with pEGFP-C3-LC3A whole cell lysate (10ug).