

## Product datasheet for **TA392691M**

### PI 3 Kinase Class 3 (PIK3C3) Rabbit Polyclonal Antibody

#### Product data:

Product Type:	Primary Antibodies
Applications:	WB
Recommended Dilution:	WB: 1:500~1:1000
Reactivity:	Human, Mouse, Rat
Host:	Rabbit
Isotype:	IgG
Clonality:	Polyclonal
Immunogen:	Synthetic phosphopeptide derived from human VPS34 around the phosphorylation site of Ser249.
Specificity:	VPS34 (phospho-Ser249) polyclonal antibody detects endogenous levels of VPS34 protein only when phosphorylated at Ser249.
Formulation:	Rabbit IgG, 1mg/ml in PBS with 0.02% sodium azide, 50% glycerol, pH7.2
Concentration:	1mg/ml
Conjugation:	Unconjugated
Storage:	Store at 4°C short term. Aliquot and store at -20°C long term. Avoid freeze-thaw cycles.
Stability:	1 year
Predicted Protein Size:	~ 100 kDa
Gene Name:	phosphatidylinositol 3-kinase catalytic subunit type 3
Database Link:	<a href="#">Entrez Gene 5289 Human Q8NEB9</a>
Background:	VPS34 (vacuolar protein sorting-associated protein 34), also known as VPT29, VPL7, PEP15 or END12, is a 875 amino acid peripheral membrane protein that localizes to the golgi apparatus. Belonging to the PI3/PI4-kinase family, VPS34 is involved in endosome-to-Golgi retrograde transport as part of the VPS34 PI3-kinase complex II. The VPS34 PI3-kinase complex II is required for the endosome-to-Golgi retrieval of PEP1 and KEX2, and the recruitment of VPS5 and VPS7, two components of the retromer complex, to endosomal membranes. It has been suggested that VPS34 may also be involved in ethanol tolerance and cell wall integrity.

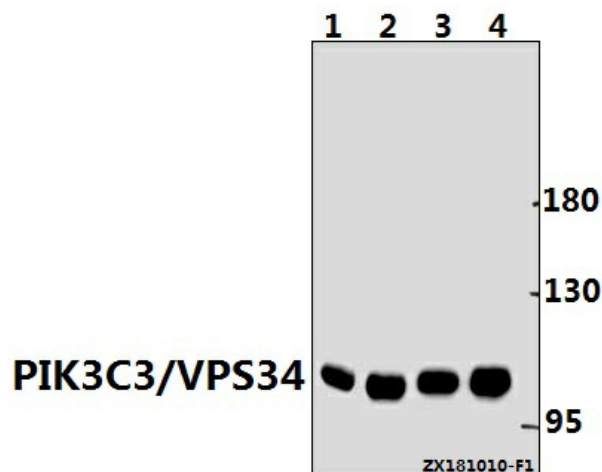


[View online »](#)

**Synonyms:** hVps34; Phosphatidylinositol 3-kinase catalytic subunit type 3 (EC:2.7.1.137); Phosphatidylinositol 3-kinase p100 subunit; Phosphoinositide-3-kinase class 3; PI3-kinase type 3; PI3K type 3; PIK3C3; PtdIns-3-kinase type 3

**Note:** For research use only, not for use in diagnostic procedure.

**Product images:**



Western blot (WB) analysis of PIK3C3/VPS34 pAb at 1:500 dilution Lane1:C6 whole cell lysate(40ug) Lane2:AML-12 whole cell lysate(40ug) Lane3:H1792 whole cell lysate(40ug) Lane4:MCF-7 whole cell lysate(40ug)