

## Product datasheet for **TA392689M**

### G protein beta subunit like (MLST8) Rabbit Polyclonal Antibody

#### Product data:

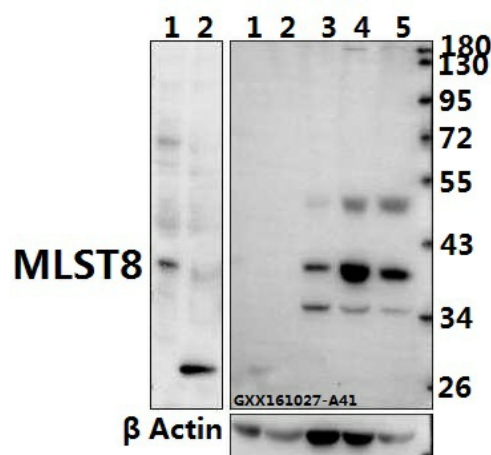
Product Type:	Primary Antibodies
Applications:	WB
Recommended Dilution:	WB: 1:500~1:1000
Reactivity:	Human, Mouse, Rat
Host:	Rabbit
Isotype:	IgG
Clonality:	Polyclonal
Immunogen:	Synthetic peptide, corresponding Human MLST8.
Specificity:	MLST8 polyclonal antibody detects endogenous levels of MLST8 protein.
Formulation:	Rabbit IgG, 1mg/ml in PBS with 0.02% sodium azide, 50% glycerol, pH7.2
Concentration:	1mg/ml
Conjugation:	Unconjugated
Storage:	Store at 4°C short term. Aliquot and store at -20°C long term. Avoid freeze-thaw cycles.
Stability:	1 year
Predicted Protein Size:	~ 36 kDa
Gene Name:	MTOR associated protein, LST8 homolog
Database Link:	<a href="#">Entrez Gene 64223 Human Q9BVC4</a>
Background:	<p>Subunit of both mTORC1 and mTORC2, which regulates cell growth and survival in response to nutrient and hormonal signals. mTORC1 is activated in response to growth factors or amino acids. Growth factor-stimulated mTORC1 activation involves a AKT1-mediated phosphorylation of TSC1-TSC2, which leads to the activation of the RHEB GTPase that potentially activates the protein kinase activity of mTORC1. Amino acid-signaling to mTORC1 requires its relocation to the lysosomes mediated by the Ragulator complex and the Rag GTPases. Activated mTORC1 up-regulates protein synthesis by phosphorylating key regulators of mRNA translation and ribosome synthesis. mTORC1 phosphorylates EIF4EBP1 and releases it from inhibiting the elongation initiation factor 4E (eIF4E).</p>

[View online »](#)

**Synonyms:** Gable; GBL; GBL protein; G protein beta subunit-like; G protein beta subunit like; LST8; Mammalian lethal with SEC13 protein 8; MGC111011; mLST8; Protein GbetaL; Target of rapamycin complex subunit LST8; TORC subunit LST8

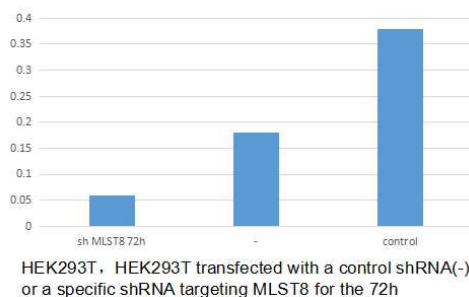
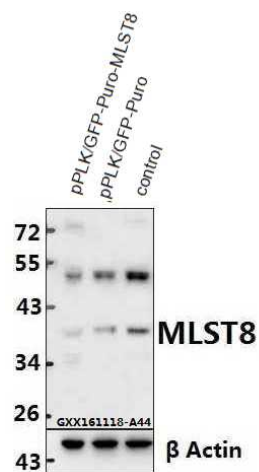
**Note:** For research use only, not for use in diagnostic procedure.

**Product images:**



Western blot (WB) analysis of MLST8 polyclonal antibody at 1:500 dilution Lane1:The Heart tissue lysate of Mouse(40ug) Lane2:The Heart tissue lysate of Rat(40ug) Lane3:HCC827 whole cell lysate(40ug) Lane4:L02 whole cell lysate(40ug) Lane5:HEK293T whole cell lysate(40ug)

Western blot analysis of various lysates using Phospho-STAT1-S727 Rabbit mAb ([TA392689]) at 1:1000 dilution. Both HeLa cells and NIH/3T3 cells were treated by UV at room temperature for 15-30 minutes.  
Secondary antibody: HRP-conjugated Goat anti-Rabbit IgG (H+L) (AS014) at 1:10000 dilution.  
Lysates/proteins: 25μg per lane.  
Blocking buffer: 3% BSA.  
Detection: ECL Basic Kit (RM00020).  
Exposure time: 1min.



Western blot analysis of extracts from HEK293T cells(Lane 3), HEK293T cells transfected with control shRNA for 72h (-) (Lane 2) or MLST8 shRNA (+)(Lane 1).MLST8 was detected using MLST8 pAb #[TA392689].The MLST8 Antibody confirms silencing of MLST8 expression.