

## Product datasheet for **TA392687M**

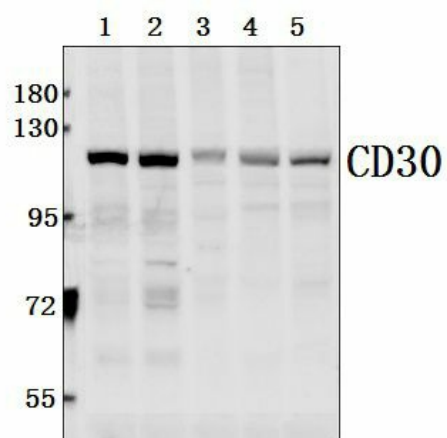
### CD30 (TNFRSF8) Rabbit Polyclonal Antibody

#### Product data:

Product Type:	Primary Antibodies
Applications:	WB
Recommended Dilution:	WB: 1:500~1:1000
Reactivity:	Human, Mouse, Rat
Host:	Rabbit
Isotype:	IgG
Clonality:	Polyclonal
Immunogen:	Synthetic peptide, corresponding to amino acids 500-600 of Human CD30.
Specificity:	CD30 (Q21) polyclonal antibody detects endogenous levels of CD30 protein.
Formulation:	Rabbit IgG, 1mg/ml in PBS with 0.02% sodium azide, 50% glycerol, pH7.2
Concentration:	1mg/ml
Conjugation:	Unconjugated
Storage:	Store at 4°C short term. Aliquot and store at -20°C long term. Avoid freeze-thaw cycles.
Stability:	1 year
Predicted Protein Size:	~ 120 kDa
Gene Name:	tumor necrosis factor receptor superfamily member 8
Database Link:	<a href="#">Entrez Gene 943 Human P28908</a>
Background:	The tumor necrosis factor (TNF) receptor family is composed of several type I integral membrane glycoproteins that exhibit homology in their cystine-rich extracellular domains. Members of this family include FAS, OX40, CD27 and CD30. CD30 is a surface marker for neoplastic cells of the Hodgkin's lymphoma and related hematologic malignancies.
Synonyms:	CD30; CD30L receptor; D1S166E; Ki-1 antigen; Lymphocyte activation antigen CD30; NFRSF8; Tumor necrosis factor receptor superfamily member 8
Note:	For research use only, not for use in diagnostic procedure.



[View online »](#)

**Product images:**


Western blot (WB) analysis of CD30 (Q21) polyclonal antibody at 1:500 dilution Lane1:MCF-7 whole cell lysate(40ug) Lane2:HEK293T whole cell lysate(40ug) Lane3:PC12 whole cell lysate(40ug) Lane4:BV2 whole cell lysate(40ug) Lane5:The Kidney tissue lysate of Mouse(40ug)