

## Product datasheet for **TA392683S**

### Apg10 (ATG10) Rabbit Polyclonal Antibody

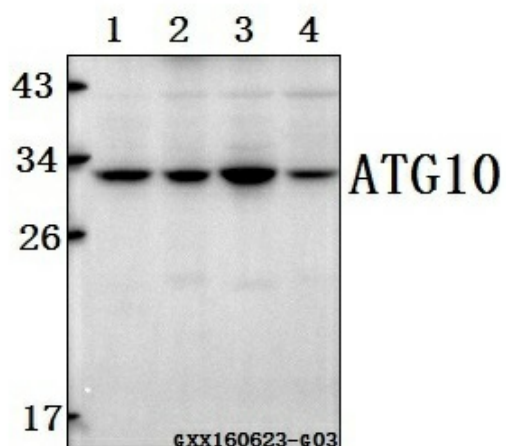
#### Product data:

Product Type:	Primary Antibodies
Applications:	WB
Recommended Dilution:	WB: 1:500~1:1000
Reactivity:	Human
Host:	Rabbit
Isotype:	IgG
Clonality:	Polyclonal
Immunogen:	Synthetic peptide, corresponding to amino acids 200-245 of Human ATG1.
Specificity:	ATG10 (P220) polyclonal antibody detects endogenous levels of ATG10 protein.
Formulation:	Rabbit IgG, 1mg/ml in PBS with 0.02% sodium azide, 50% glycerol, pH7.2
Concentration:	1mg/ml
Conjugation:	Unconjugated
Storage:	Store at 4°C short term. Aliquot and store at -20°C long term. Avoid freeze-thaw cycles.
Stability:	1 year
Predicted Protein Size:	~ 30 kDa
Gene Name:	autophagy related 10
Database Link:	<a href="#">Entrez Gene 83734 Human Q9H0Y0</a>
Background:	Autophagy is a process for the bulk degradation of cytosolic compartments by lysosomes. ATG10 is an E2-like enzyme involved in 2 ubiquitin-like modifications essential for autophagosome formation: ATG12 (MIM 609608)-ATG5 (MIM 604261) conjugation and modification of a soluble form of MAP-LC3 (MAP1LC3A; MIM 601242), a homolog of yeast Apg8, to a membrane-bound form (Nemoto et al., 2003
Synonyms:	APG10-like; APG10L; Autophagy-related protein 10; PP12616; Ubiquitin-like-conjugating enzyme ATG10
Note:	For research use only, not for use in diagnostic procedure.



[View online »](#)

## Product images:



Western blot (WB) analysis of ATG10 (P220) polyclonal antibody at 1:500 dilution  
Lane1:Hct116 whole cell lysate(40ug) Lane2:786-O whole cell lysate(40ug) Lane3:SGC-7901 whole cell lysate(40ug) Lane4:HEK293T whole cell lysate(40ug)