

## Product datasheet for **TA392677M**

### SLC16A5 Rabbit Polyclonal Antibody

#### Product data:

Product Type:	Primary Antibodies
Applications:	WB
Recommended Dilution:	WB: 1:500~1:1000
Reactivity:	Human, Mouse, Rat
Host:	Rabbit
Isotype:	IgG
Clonality:	Polyclonal
Immunogen:	Synthetic peptide, corresponding to amino acids 161-210 of Human SLC16A5.
Specificity:	SLC16A5 (A193) polyclonal antibody detects endogenous levels of SLC16A5 protein.
Formulation:	Rabbit IgG, 1mg/ml in PBS with 0.02% sodium azide, 50% glycerol, pH7.2
Concentration:	1mg/ml
Conjugation:	Unconjugated
Storage:	Store at 4°C short term. Aliquot and store at -20°C long term. Avoid freeze-thaw cycles.
Stability:	1 year
Predicted Protein Size:	~ 55 kDa
Gene Name:	solute carrier family 16 member 5
Database Link:	<a href="#">Entrez Gene 9121 Human O15375</a>

[View online »](#)

**Background:**

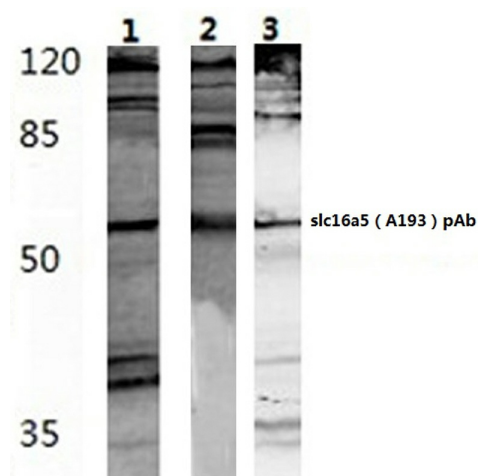
Monocarboxylates, such as lactate and pyruvate, play an integral role in cellular metabolism. Lactic acid is produced in large quantities as a result of glycolysis, which provides the majority of ATP to cells under normal physiological conditions. However, accumulation of lactic acid leads to a decrease in intracellular pH and cessation of glycolysis. In order for glycolysis to continue at a high rate, lactic acid must be transported out of the cell. This transport process is carried out by a family of monocarboxylate transporters (MCTs), which function as proton symports and are stereoselective for L-lactate. The MCT family consists of at least eight members, MCT1-8, which contain between 10-12 transmembrane-helical (TM) domains, with the amino and carboxy termini located in the cytoplasm. MCT6 is highly expressed in the kidneys and is thought to have a specificity for bumetanide, a loop diuretic involved in the treatment of edema. The high substrate specificity of MCT6 suggests a possible role in therapeutic drug transport and trafficking across the plasma membrane.

**Synonyms:**

MCT 5; MCT5; MCT 6; MCT6; Monocarboxylate transporter 5; Monocarboxylate transporter 6; SLC16A5; Solute carrier family 16 member 5

**Note:**

For research use only, not for use in diagnostic procedure.

**Product images:**


Western blot (WB) analysis of SLC16A5 (A193) polyclonal antibody at 1:500 dilution  
 Lane1:HEK293T whole cell lysate(40µg)  
 Lane2:NIH-3T3 whole cell lysate(40µg)  
 Lane3:PC12 whole cell lysate(40µg)