

## Product datasheet for **TA392676M**

### TRAF2 Rabbit Polyclonal Antibody

#### Product data:

Product Type:	Primary Antibodies
Applications:	WB
Recommended Dilution:	WB: 1:500~1:1000
Reactivity:	Human, Mouse, Rat
Host:	Rabbit
Isotype:	IgG
Clonality:	Polyclonal
Immunogen:	Synthetic peptide, corresponding to the N-terminus of Human TRAF2.
Specificity:	TRAF2 (S11) polyclonal antibody detects endogenous levels of TRAF2 protein.
Formulation:	Rabbit IgG, 1mg/ml in PBS with 0.02% sodium azide, 50% glycerol, pH7.2
Concentration:	1mg/ml
Conjugation:	Unconjugated
Storage:	Store at 4°C short term. Aliquot and store at -20°C long term. Avoid freeze-thaw cycles.
Stability:	1 year
Predicted Protein Size:	~ 56 kDa
Gene Name:	TNF receptor associated factor 2
Database Link:	<a href="#">Entrez Gene 7186 Human Q12933</a>



[View online »](#)

**Background:**

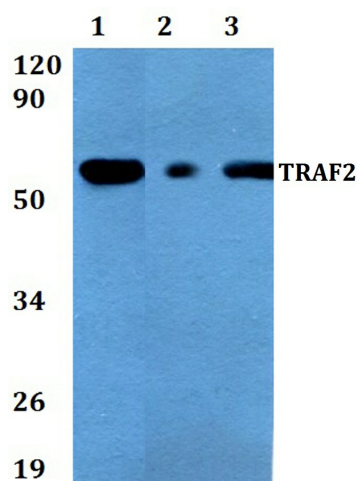
Tumor necrosis factor (TNF)-activated cell signaling is mediated primarily through the TNF receptor 1 (TNF-R1) and, to a lesser extent, TNF-R2. Both TNF receptors are members of the expanding TNF receptor superfamily, which includes the FAS antigen and CD40. Potential insight into an understanding of TNF receptor-mediated signaling was provided by the identification of two related proteins, TRAF1 and TRAF2 (for TNF receptor-associated factors 1 and 2, respectively). Both function to form heterodimeric complexes and associate with the cytoplasmic domain of TNF-R2. A third member of this protein family, alternatively designated CD40 bp, CRAF1, LAP1 or TRAF3, has been identified and shown to associate with the cytoplasmic domain of CD40. The similarity between a specific region of TRAF3 with regions of TRAF1 and TRAF2 define a “TRAF-C” domain that is necessary and sufficient for CD40 binding and homodimerization.

**Synonyms:**

E3 ubiquitin-protein ligase TRAF2; TNF receptor-associated factor 2; TRAF2; TRAF3; Tumor necrosis factor type 2 receptor-associated protein 3

**Note:**

For research use only, not for use in diagnostic procedure.

**Product images:**


Western blot (WB) analysis of TRAF2 (S11) polyclonal antibody at 1:500 dilution  
Lane1:HEK293T whole cell lysate Lane2:Raw264.7 whole cell lysate Lane3:PC12 whole cell lysate