

## Product datasheet for **TA392675S**

### Acetylcholinesterase (ACHE) Rabbit Polyclonal Antibody

#### Product data:

Product Type:	Primary Antibodies
Applications:	WB
Recommended Dilution:	WB: 1:500~1:1000 IHC: 1:50~1:200
Reactivity:	Human, Mouse, Rat
Host:	Rabbit
Isotype:	IgG
Clonality:	Polyclonal
Immunogen:	Synthetic peptide corresponding to residues in Human AChE.
Specificity:	ACHE polyclonal antibody detects endogenous levels of ACHE protein.
Formulation:	Rabbit IgG, 1mg/ml in PBS with 0.02% sodium azide, 50% glycerol, pH7.2
Concentration:	1mg/ml
Conjugation:	Unconjugated
Storage:	Store at 4°C short term. Aliquot and store at -20°C long term. Avoid freeze-thaw cycles.
Stability:	1 year
Predicted Protein Size:	~ 70 kDa
Gene Name:	acetylcholinesterase (Cartwright blood group)
Database Link:	<a href="#">Entrez Gene 43 Human P22303</a>



[View online »](#)

**Background:**

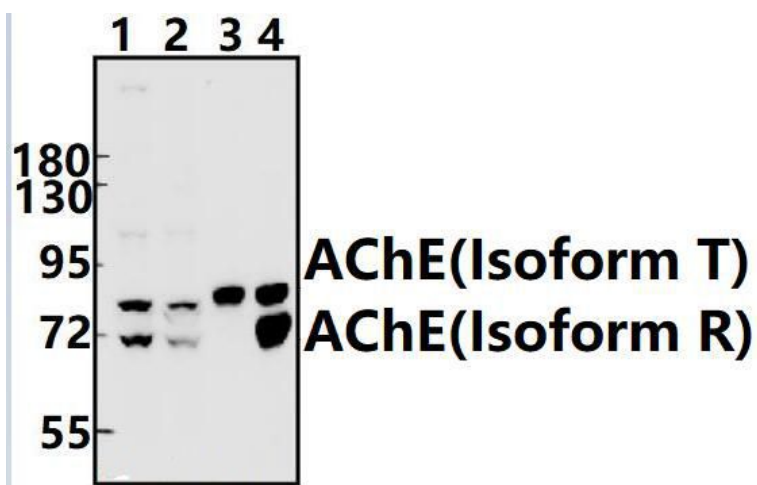
Acetylcholinesterase (AChE) hydrolyzes acetylcholine at synaptic junctions. Alternative mRNA splicing gives rise to three forms of AChE. The T form, also known as the asymmetric form, is soluble and is present in synapses. The H form is also known as the globular form and is present on the outer surfaces of cell membranes. The R form is not known to be a functional species. AChE globular form subunits are GPI-anchored to cell membranes and asymmetric subunits are anchored to basal lamina components by a collagen tail. The catalytic subunits of AChE are oligomers composed of disulfide-linked homodimers. The loss of AChE from cholinergic and noncholinergic neurons in the brain is seen in patients with Alzheimer's disease. However, AChE activity is increased around amyloid plaques, which may be due to a disturbance in calcium homeostasis involving the opening of L-type voltage-dependent calcium channels.

**Synonyms:**

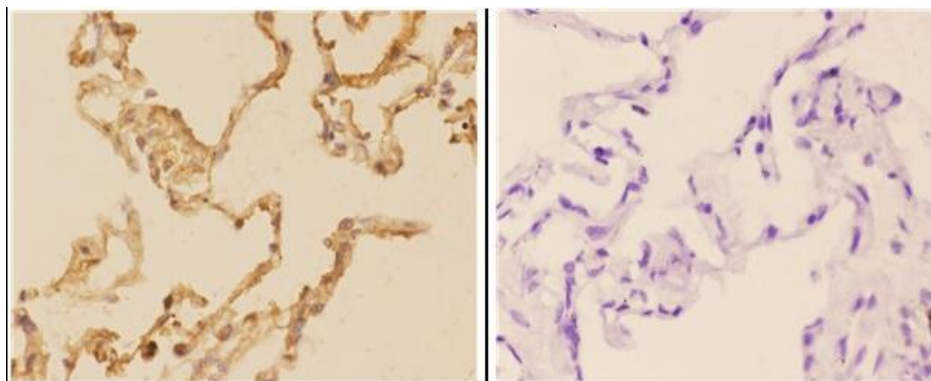
ACES; Acetylcholinesterase; ACHE; AChE

**Note:**

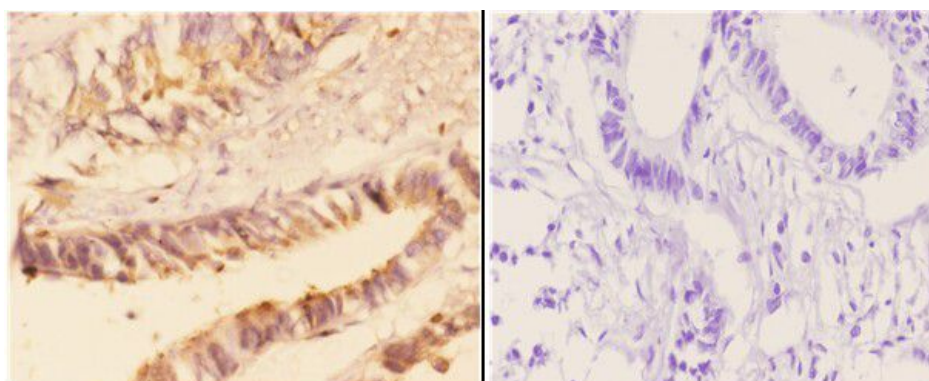
For research use only, not for use in diagnostic procedure.

**Product images:**


Western blot (WB) analysis of AChE pAb at 1:500 dilution Lane1:K562 whole cell lysate(40ug) Lane2:SGC7901 whole cell lysate(40ug) Lane3:The Blood tissue lysate of Mouse(40ug) Lane4:The Blood tissue lysate of Rat(40ug)



Immunohistochemistry (IHC) analyzes of AChE pAb in paraffin-embedded human lung carcinoma tissue at 1:50, showing membrane and nuclear staining. Negative control (the right) Using PBS instead of primary antibody, secondary antibody is Goat Anti-Rabbit IgG-biotin followed by avidin-peroxidase.



Immunohistochemistry (IHC) analyzes of AChE pAb in paraffin-embedded human rectum carcinoma tissue at 1:50, showing membrane and nuclear staining. Negative control (the right) Using PBS instead of primary antibody, secondary antibody is Goat Anti-Rabbit IgG-biotin followed by avidin-peroxidase.