

## Product datasheet for **TA392674S**

### Calprotectin (S100A8) Rabbit Polyclonal Antibody

#### Product data:

Product Type:	Primary Antibodies
Applications:	WB
Recommended Dilution:	WB:1:500~1:1000 IHC:1:50~1:200
Reactivity:	Human, Mouse, Rat
Host:	Rabbit
Isotype:	IgG
Clonality:	Polyclonal
Immunogen:	Synthetic peptide, corresponding to amino acids CMGVAAHKKSHEESHKE of Human MRP8.
Specificity:	MRP8 polyclonal antibody detects endogenous levels of MRP8 protein.
Formulation:	Rabbit IgG, 1mg/ml in PBS with 0.02% sodium azide, 50% glycerol, pH7.2
Concentration:	1mg/ml
Conjugation:	Unconjugated
Storage:	Store at 4°C short term. Aliquot and store at -20°C long term. Avoid freeze-thaw cycles.
Stability:	1 year
Predicted Protein Size:	~ 23 kDa
Gene Name:	S100 calcium binding protein A8
Database Link:	<a href="#">Entrez Gene 6279 Human P05109</a>
Background:	<p>The family of EF-hand type Ca<sup>2+</sup>-binding proteins includes Calbindin (previously designated vitamin D-dependent Ca<sup>2+</sup>-binding protein), S-100 <math>\alpha</math> and <math>\beta</math>, Cal-granulins A (also designated MRP8), B (also designated MRP14) and C (S-100 like proteins) and the parvalbumin family members, including parvalbumin <math>\alpha</math> and parvalbumin <math>\beta</math> (also designated oncomodulin). Calbindin, S-100 proteins and parvalbumin proteins are each expressed in neural tissues. In addition, S-100 <math>\alpha</math> and <math>\beta</math> are present in a variety of other tissues and Calbindin is present in intestine and kidney. Parvalbumin <math>\alpha</math> is also found in fast-contracting/ relaxing skeletal muscle fibers and parvalbumin <math>\beta</math> is found in many tumor tissues as well as in the organ of Corti.</p>

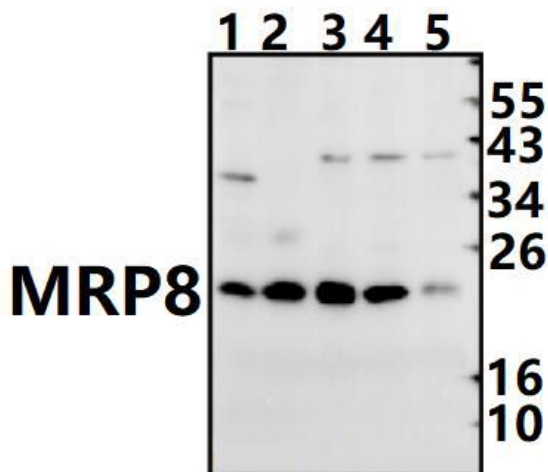


[View online »](#)

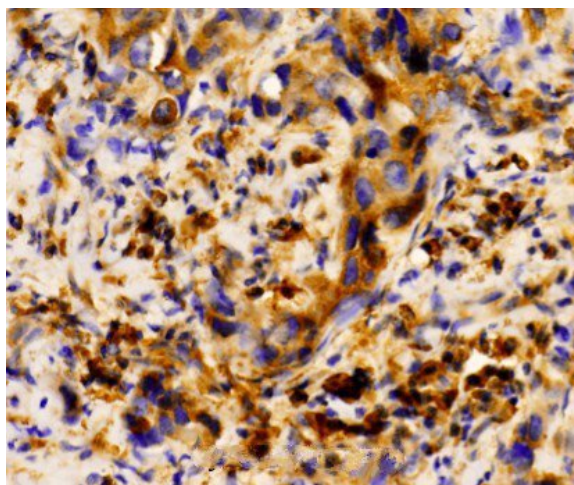
**Synonyms:** CAGA; Calgranulin-A; Calprotectin L1L subunit; CFAG; Cystic fibrosis antigen; Leukocyte L1 complex light chain; Migration inhibitory factor-related protein 8; MRP-8; MRP8; Protein S100-A8; Protein S100-A8, N-terminally processed; S100 calcium-binding protein A8; S100A8; Urinary stone protein band A

**Note:** For research use only, not for use in diagnostic procedure.

**Product images:**



Western blot (WB) analysis of MRP8 pAb at 1:500 dilution Lane1:PC12 whole cell lysate(40ug) Lane2:SP2/0 whole cell lysate(40ug) Lane3:EC9706 whole cell lysate(40ug) Lane4:A375 whole cell lysate(40ug) Lane5:HCC827 whole cell lysate(40ug)



Immunohistochemistry (IHC) analyzes of MRP8 pAb in paraffin-embedded human breast carcinoma tissue at 1:100.