

## Product datasheet for TA392672

### SSB Rabbit Polyclonal Antibody

#### Product data:

Product Type:	Primary Antibodies
Applications:	WB
Recommended Dilution:	WB: 1:1000~1:2000
Reactivity:	Human, Mouse, Rat
Host:	Rabbit
Isotype:	IgG
Clonality:	Polyclonal
Immunogen:	Synthetic peptide, corresponding to amino acids 331-380 of Human SSB.
Specificity:	SSB(T362) polyclonal antibody detects endogenous levels of SSB protein.
Formulation:	Rabbit IgG, 1mg/ml in PBS with 0.02% sodium azide, 50% glycerol, pH7.2
Concentration:	1mg/ml
Conjugation:	Unconjugated
Storage:	Store at 4°C short term. Aliquot and store at -20°C long term. Avoid freeze-thaw cycles.
Stability:	1 year
Predicted Protein Size:	~ 52 kDa
Gene Name:	Sjogren syndrome antigen B
Database Link:	<a href="#">Entrez Gene 6741 Human P05455</a>
Background:	Ro/SSA is a ribonucleoprotein that binds to autoantibodies in 35 to 50% of patients with SLE and in up to 97% of patients with Sjogren syndrome. The Ro/SSA particle consists of a single immunoreactive protein noncovalently bound with one of four small RNA molecules. Most anti-Ro/SSA-positive sera have antibodies not only against the immunoreactive protein, but also against an Ro/SSA protein. The genes which encode the two proteins map to human chromosomes 11p15.5 and 1q31, respectively. La/SSB is an autoimmune RNA-binding protein that plays a role in the transcription of RNA polymerase III was originally defined by its reactivity with autoantibodies from patients with Sjogren syndrome and SLE.



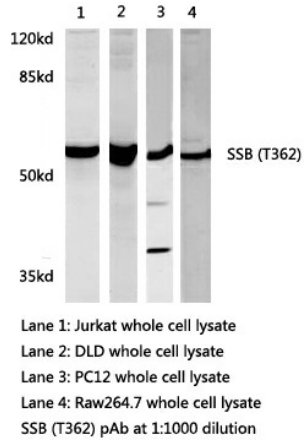
[View online »](#)

**Synonyms:**

Autoantigen La; La; LA; La autoantigen; La autoantigen homolog; La protein; La ribonucleoprotein; La ribonucleoprotein domain family member 3; LARP3; Lupus La antigen; Lupus La protein; Lupus La protein homolog; MGC93380; MGC118101; mRNA for autoantigen; OTTMUSP00000014043; RP23 273G23.1; Sjogren syndrome type B antigen; Sjogren syndrome antigen B; Sjogren syndrome antigen B (autoantigen La); SS-B; SS-B/La protein; SS B; SSB

**Note:**

For research use only, not for use in diagnostic procedure.

**Product images:**


Western blot (WB) analysis of SSB (T362) polyclonal antibody at 1:1000 dilution  
 Lane1:HEK293T whole cell lysate(40ug) Lane2:L02 whole cell lysate(40ug) Lane3:SK-OVCAR3 whole cell lysate(40ug) Lane4:MCF-7 whole cell lysate(40ug) Lane5:HepG2 whole cell lysate(40ug) Lane6:A549 whole cell lysate(40ug)