

Product datasheet for **TA392670M**

KIF20A Rabbit Polyclonal Antibody

Product data:

| | |
|-------------------------|---|
| Product Type: | Primary Antibodies |
| Applications: | WB |
| Recommended Dilution: | WB: 1:500~1:1000 |
| Reactivity: | Human |
| Host: | Rabbit |
| Isotype: | IgG |
| Clonality: | Polyclonal |
| Immunogen: | Synthetic peptide, corresponding to amino acids 501-550 of Human KIF20A. |
| Specificity: | KIF20A(I524) polyclonal antibody detects endogenous levels of KIF20A protein. |
| Formulation: | Rabbit IgG, 1mg/ml in PBS with 0.02% sodium azide, 50% glycerol, pH7.2 |
| Concentration: | 1mg/ml |
| Conjugation: | Unconjugated |
| Storage: | Store at 4°C short term. Aliquot and store at -20°C long term. Avoid freeze-thaw cycles. |
| Stability: | 1 year |
| Predicted Protein Size: | ~ 100 kDa |
| Gene Name: | kinesin family member 20A |
| Database Link: | Entrez Gene 10112 Human O95235 |
| Background: | The Kinesins constitute a large family of microtubule-dependent motor proteins which are responsible for the distribution of numerous organelles, vesicles and macromolecular complexes throughout the cell. Individual Kinesin members play crucial roles in cell division, intracellular transport and membrane trafficking events, including endocytosis and transcytosis. KIF20A (kinesin family member 20A), also known as Rabkinesin-6, RAB6KIFL (Rab6-interacting kinesin-like protein), GG10_2 or MKLP2 (mitotic kinesin-like protein 2), is a 890 amino acid protein that contains one kinesin-motor domain and belongs to the Kinesin-like protein family. KIF20A locates to the Golgi apparatus and interacts with guanosine triphosphate (GTP)-bound forms of RAB 6. KIF20A may be responsible for the retrograde RAB 6 regulated transport of Golgi membranes and related vesicles along microtubules. |

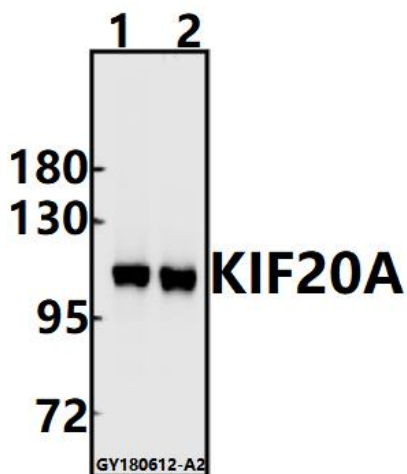


[View online »](#)

Synonyms: GG10_2; KIF20A; Kinesin-like protein KIF20A; Mitotic kinesin-like protein 2; MKLP2; MKlp2; Rab6-interacting kinesin-like protein; RAB6KIFL; Rabkinesin-6

Note: For research use only, not for use in diagnostic procedure.

Product images:



Western blot (WB) analysis of KIF20A (I524) pAb at 1:500 dilution Lane1:SGC7901 whole cell lysate(10ug) Lane2:EC9706 whole cell lysate(10ug)