

Product datasheet for **TA392668M**

SMAD3 Rabbit Polyclonal Antibody

Product data:

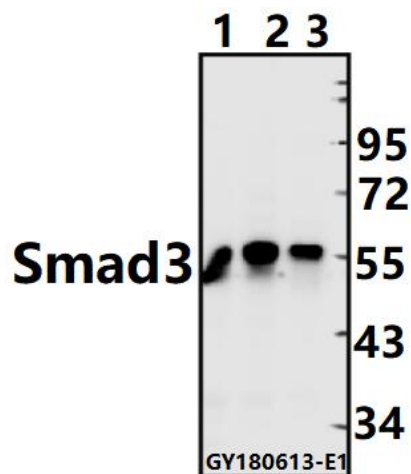
Product Type:	Primary Antibodies
Applications:	WB
Recommended Dilution:	WB: 1:1000~1:2000
Reactivity:	Human, Mouse, Rat
Host:	Rabbit
Isotype:	IgG
Clonality:	Polyclonal
Immunogen:	Synthetic peptide, corresponding to amino acids 170-220 of Human Smad3.
Specificity:	Smad3 (M200) polyclonal antibody detects endogenous levels of Smad3 protein.
Formulation:	Rabbit IgG, 1mg/ml in PBS with 0.02% sodium azide, 50% glycerol, pH7.2
Concentration:	1mg/ml
Conjugation:	Unconjugated
Storage:	Store at 4°C short term. Aliquot and store at -20°C long term. Avoid freeze-thaw cycles.
Stability:	1 year
Predicted Protein Size:	~ 48, 55 kDa
Gene Name:	SMAD family member 3
Database Link:	Entrez Gene 4088 Human P84022
Background:	<p>Smad proteins, the mammalian homologs of the Drosophila mothers against decapentaplegic (Mad), have been implicated as downstream effectors of GFB/BMP signaling. Smad1 (also designated Madr1 or JV4-1) and Smad5 are effectors of BMP-2 and BMP-4 function, while Smad2 (also designated Madr2 or JV18-1) and Smad3 are involved in TGFβ and activin-mediated growth modulation. Smad4 (also designated DPC4) has been shown to mediate all of the above activities through interaction with various Smad family members. Smad6 and Smad7 regulate the response to activin/TGFβ signaling by interfering with TGFβ-mediated phosphorylation of other Smad proteins.</p>


[View online »](#)

Synonyms: hMAD-3; hSMAD3; JV15-2; Mad3; MADH3; MAD homolog 3; Mothers against decapentaplegic homolog 3; Mothers against DPP homolog 3; SMAD 3; SMAD3; Smad3; SMAD family member 3

Note: For research use only, not for use in diagnostic procedure.

Product images:



Western blot (WB) analysis of Smad3 (M200) pAb at 1:1000 dilution Lane1:CT26 whole cell lysate(40ug) Lane2:PC12 whole cell lysate(40ug) Lane3:MCF-7 whole cell lysate(40ug)