

Product datasheet for **TA392666**

SMAD2 Rabbit Polyclonal Antibody

Product data:

Product Type:	Primary Antibodies
Applications:	WB
Recommended Dilution:	WB: 1:500~1:1000
Reactivity:	Human, Mouse, Rat
Host:	Rabbit
Isotype:	IgG
Clonality:	Polyclonal
Immunogen:	Synthetic peptide, corresponding to the N-terminal of Human Smad2.
Specificity:	Smad2 (S2) polyclonal antibody detects endogenous levels of Smad2 protein.
Formulation:	Rabbit IgG, 1mg/ml in PBS with 0.02% sodium azide, 50% glycerol, pH7.2
Concentration:	1mg/ml
Conjugation:	Unconjugated
Storage:	Store at 4°C short term. Aliquot and store at -20°C long term. Avoid freeze-thaw cycles.
Stability:	1 year
Predicted Protein Size:	~ 60 kDa
Gene Name:	SMAD family member 2
Database Link:	Entrez Gene 4087 Human Q15796

Background: Smad proteins, the mammalian homologs of the Drosophila mothers against decapentaplegic (Mad), have been implicated as downstream effectors of GFB/BMP signaling. Smad1 (also designated Madr1 or JV4-1) and Smad5 are effectors of BMP-2 and BMP-4 function, while Smad2 (also designated Madr2 or JV18-1) and Smad3 are involved in TGF β and activin-mediated growth modulation. Smad4 (also designated DPC4) has been shown to mediate all of the above activities through interaction with various Smad family members. Smad6 and Smad7 regulate the response to activin/TGF β signaling by interfering with TGF β -mediated phosphorylation of other Smad proteins.



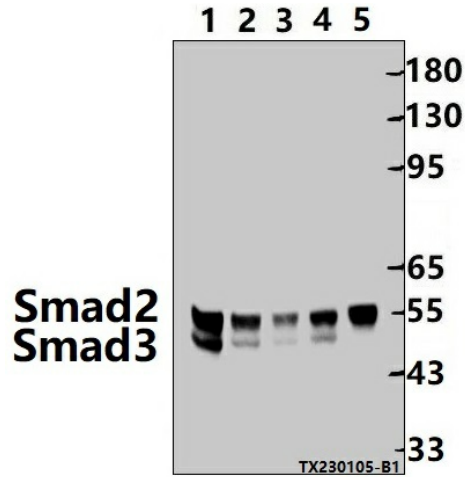
[View online »](#)

Synonyms:

hMAD-2; hSMAD2; JV18-1; Mad-related protein 2; MADH2; MAD homolog 2; MADR2; Mothers against decapentaplegic homolog 2; Mothers against DPP homolog 2; SMAD 2; SMAD2; Smad2; SMAD family member 2

Note:

For research use only, not for use in diagnostic procedure.

Product images:


Western blot (WB) analysis of Smad2 (S2) polyclonal antibody at 1:500 dilution
 Lane1:HEK293T whole cell lysate Lane2:Raw264.7 whole cell lysate Lane3:H9C2 whole cell lysate