

## Product datasheet for **TA392664**

### PKC delta (PRKCD) Rabbit Polyclonal Antibody

#### Product data:

Product Type:	Primary Antibodies
Applications:	WB
Recommended Dilution:	WB:1:500~1:1000 IHC:1:50~1:200 IP:1:10~1:100
Reactivity:	Human, Mouse, Rat
Host:	Rabbit
Isotype:	IgG
Clonality:	Polyclonal
Immunogen:	Synthetic peptide, corresponding to amino acids 470-520 of Human PKC $\delta$ .
Specificity:	PKC $\delta$ (G499) polyclonal antibody detects endogenous levels of PKC $\delta$ protein.
Formulation:	Rabbit IgG, 1mg/ml in PBS with 0.02% sodium azide, 50% glycerol, pH7.2
Concentration:	1mg/ml
Conjugation:	Unconjugated
Storage:	Store at 4°C short term. Aliquot and store at -20°C long term. Avoid freeze-thaw cycles.
Stability:	1 year
Predicted Protein Size:	~ 80 kDa
Gene Name:	protein kinase C delta
Database Link:	<a href="#">Entrez Gene 5580 Human Q05655</a>
Background:	Protein Kinase C delta (PKC delta) is a 78 kDa member of the novel group (nPKCs: sensitive to diacylglycerol, phosphatidylserine, and phorbol esters) of the PKC family of serine/threonine kinases that are involved in a wide range of physiological processes including mitogenesis, cell survival and transcriptional regulation. PKC delta is an ubiquitously expressed PKC isozyme that has been implicated in the regulation of multiple cellular processes including cell cycle progression and apoptosis. Autophosphorylation of serine 664 (serine 662 in mouse and rat) contributes to PKC delta activity. Serum dependent phosphorylation of serine 664 is mediated by mTOR pathway, is protected from dephosphorylation by phosphorylated threonine 505 in the activation loop, and is implicated in prolactin signaling.

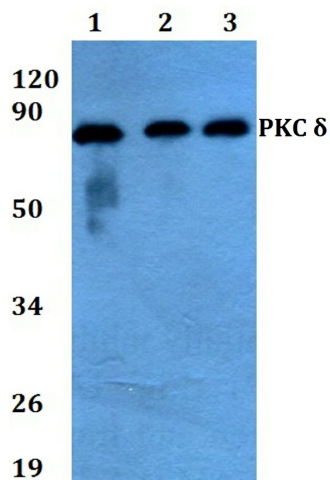


[View online »](#)

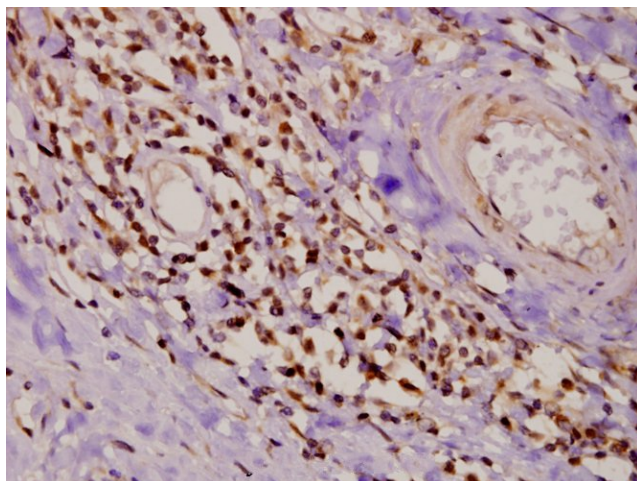
**Synonyms:** nPKC-delta; PKC $\delta$ ; PRKCD; Protein kinase C delta type; SDK1; Sphingosine-dependent protein kinase-1; Tyrosine-protein kinase PRKCD

**Note:** For research use only, not for use in diagnostic procedure.

**Product images:**



Western blot (WB) analysis of PKC  $\delta$  (G499) polyclonal antibody at 1:500 dilution  
 Lane1:HEK293T whole cell lysate(40ug) Lane2:L02 whole cell lysate(40ug) Lane3:BV2 whole cell lysate(40ug) Lane4:H9C2 whole cell lysate(40ug)



Immunohistochemistry (IHC) analyzes of PKC  $\delta$  (G499) pAb in paraffin-embedded human tonsil carcinoma tissue at 1:50.