

## Product datasheet for TA392663

### PKC alpha (PRKCA) Rabbit Polyclonal Antibody

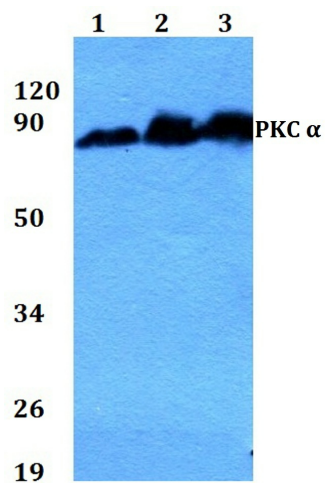
#### Product data:

Product Type:	Primary Antibodies
Applications:	WB
Recommended Dilution:	WB:1:500~1:1000 IHC:1:50~1:200 IP:1:10~1:100
Reactivity:	Human, Mouse, Rat
Host:	Rabbit
Isotype:	IgG
Clonality:	Polyclonal
Immunogen:	Synthetic peptide, corresponding to amino acids 600-650 of Human PKC $\alpha$ .
Specificity:	PKC $\alpha$ (G633) polyclonal antibody detects endogenous levels of PKC $\alpha$ protein.
Formulation:	Rabbit IgG, 1mg/ml in PBS with 0.02% sodium azide, 50% glycerol, pH7.2
Concentration:	1mg/ml
Conjugation:	Unconjugated
Storage:	Store at 4°C short term. Aliquot and store at -20°C long term. Avoid freeze-thaw cycles.
Stability:	1 year
Predicted Protein Size:	~ 80 kDa
Gene Name:	protein kinase C alpha
Database Link:	<a href="#">Entrez Gene 5578 Human P17252</a>
Background:	Members of the protein kinase C (PKC) family play a key regulatory role in a variety of cellular functions including cell growth and differentiation, gene expression, hormone secretion and membrane function. PKCs were originally identified as serine/threonine protein kinases whose activity was dependent on calcium and phospholipids. Diacylglycerols (DAG) and tumor promoting phorbol esters bind to and activate PKC. PKCs can be subdivided into at least two major classes including conventional (c) PKC isoforms ( $\alpha$ , $\beta$ I, $\beta$ II and $\gamma$ ) and novel (n) PKC isoforms ( $\delta$ , $\epsilon$ , $\zeta$ , $\eta$ and $\theta$ ). Patterns of expression for each PKC isoform differ among tissues and PKC family members exhibit clear differences in their cofactor dependencies. For instance, the kinase activities of nPKC $\delta$ and $\epsilon$ are independent of $\text{Ca}^{2+}$ .
Synonyms:	PKC-A; PKC-alpha; PKCA; PRKACA; PRKCA; Protein kinase C alpha type

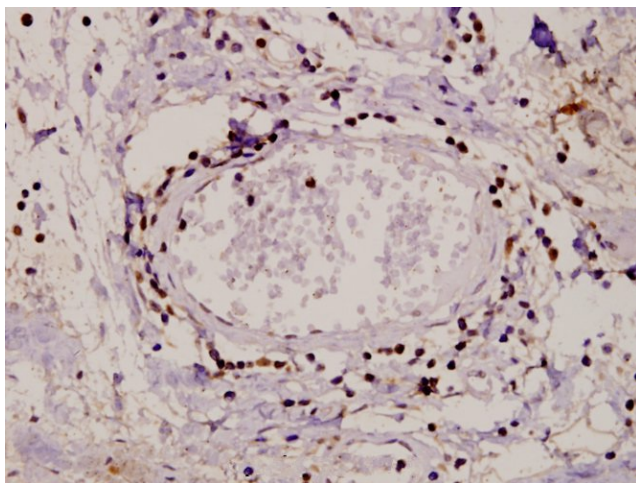

[View online »](#)

**Note:** For research use only, not for use in diagnostic procedure.

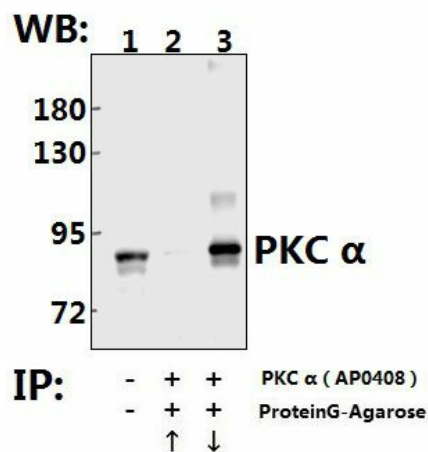
## Product images:



Western blot (WB) analysis of PKC  $\alpha$  (G633) polyclonal antibody at 1:500 dilution Lane1:PC12 whole cell lysate(40ug) Lane2:CT26 whole cell lysate(40ug) Lane3:HEK293T whole cell lysate(40ug) Lane4:L02 whole cell lysate(40ug)



Immunohistochemistry (IHC) analyzes of PKC  $\alpha$  (G633) pAb in paraffin-embedded human tonsil carcinoma tissue at 1:50.



Immunoprecipitation of A549 cell lysate using PKC α (G633) pAb (Sepharose Bead Conjugate) #BD0048(lane 2 and lane 3) .Lane 1 is 20% input. The western blot was probed using PKC α (G633) pAb #TA392663. "↑"supernatant; "↓(deposition"