

## Product datasheet for TA392662

### HSP27 (HSPB1) Rabbit Polyclonal Antibody

#### Product data:

|                         |   |
|-------------------------|---|
| Product Type:           | Primary Antibodies  |
| Applications:           | WB  |
| Recommended Dilution:   | WB: 1:500~1:1000 IHC: 1:50~1:200 IP: 1:10~1:100   |
| Reactivity:             | Human, Mouse, Rat   |
| Host:                   | Rabbit  |
| Isotype:                | IgG   |
| Clonality:              | Polyclonal  |
| Immunogen:              | Synthetic peptide, corresponding to amino acids 50-100 of Human HSP27.  |
| Specificity:            | HSP27 polyclonal antibody detects endogenous levels of HSP27 protein.   |
| Formulation:            | Rabbit IgG, 1mg/ml in PBS with 0.02% sodium azide, 50% glycerol, pH7.2  |
| Concentration:          | 1mg/ml  |
| Conjugation:            | Unconjugated  |
| Storage:                | Store at 4°C short term. Aliquot and store at -20°C long term. Avoid freeze-thaw cycles.  |
| Stability:              | 1 year  |
| Predicted Protein Size: | ~ 27 kDa  |
| Gene Name:              | heat shock protein family B (small) member 1  |
| Database Link:          | <a href="#">Entrez Gene 3315 Human P04792</a>   |
| Background:             | Hsp27, also referred to as the Estrogen-Regulated 24K protein and HSP28, is one of several small heat shock proteins (HSP) produced by all organisms studied. Hsp27 synthesis is induced by elevated temperature, as well as estrogen in hormone responsive cells. This protein is involved in stress resistance and actin organization. Interestingly, human HSP27 also shares greater than 50% homology with low molecular weight Drosophila HSP's and mammalian a-crystalline lens protein. Because of the estrogen-responsive nature of Hsp27, this protein has been studied extensively in human estrogen-responsive tissues such as cervix, endometrium and breast tissue. This work has led to the suggestion that Hsp27 may be a useful marker in classifying various hormone sensitive tumors. |

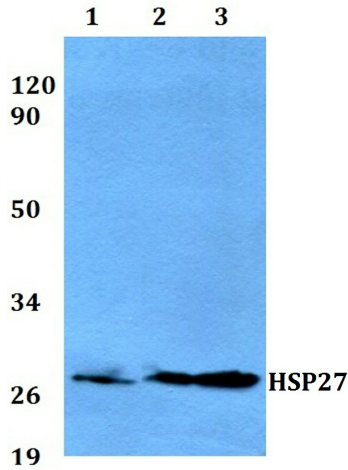


[View online »](#)

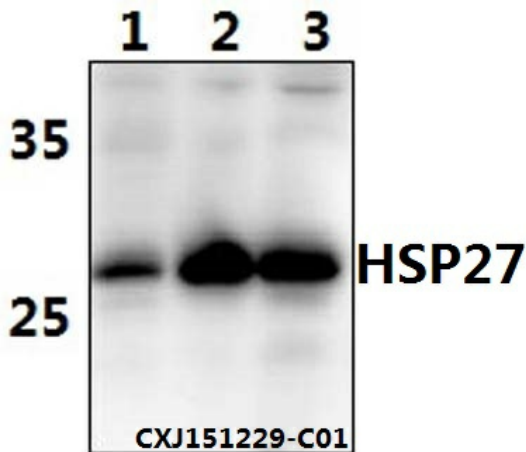
**Synonyms:** 28 kDa heat shock protein; Estrogen-regulated 24 kDa protein; Heat shock 27 kDa protein; Heat shock protein beta-1; HSP 27; HSP27; HSP28; HSPB1; HspB1; SRP27; Stress-responsive protein 27

**Note:** For research use only, not for use in diagnostic procedure.

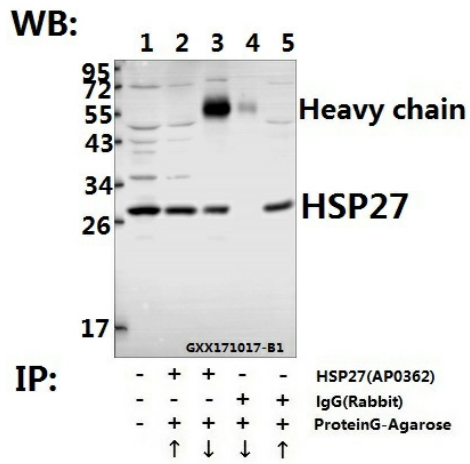
**Product images:**



Western blot (WB) analysis of HSP27 polyclonal antibody at 1:500 dilution Lane1:Hela whole cell lysate(40ug) Lane2:H9C2 whole cell lysate(40ug) Lane3:PC12 whole cell lysate(40ug)



Western blot (WB) analysis of HSP27 (S78) pAb at 1:500 dilution Lane1:Hela whole cell lysate(40ug) Lane2:H9C2 whole cell lysate(40ug) Lane3:PC12 whole cell lysate(40ug)



Immunoprecipitation of L02 whole cell lysate using HSP27 pAb (Sepharose Bead Conjugate) #BD0047 (lane 2 and lane 3) and Nonspecific IgG Control (Sepharose Bead Conjugate) #BD0047 (lane 4 and lane 5). Lane 1 is 20% input. The western blot was probed using HSP27 pAb #TA392662. "↑" = supernatant; "↓" = deposition