

Product datasheet for **TA392661M**

Telomerase reverse transcriptase (TERT) Rabbit Polyclonal Antibody

Product data:

Product Type:	Primary Antibodies
Applications:	WB
Recommended Dilution:	WB:1:500~1:1000
Reactivity:	Human, Mouse, Rat
Host:	Rabbit
Isotype:	IgG
Clonality:	Polyclonal
Immunogen:	Synthetic phosphopeptide derived from human TERT around the phosphorylation site of Serine 824.
Specificity:	p-TERT (S824) polyclonal antibody detects endogenous levels of TERT protein when phosphorylated at Ser824.
Formulation:	Rabbit IgG, 1mg/ml in PBS with 0.02% sodium azide, 50% glycerol, pH7.2
Concentration:	1mg/ml
Conjugation:	Unconjugated
Storage:	Store at 4°C short term. Aliquot and store at -20°C long term. Avoid freeze-thaw cycles.
Stability:	1 year
Predicted Protein Size:	~ 127 kDa
Gene Name:	telomerase reverse transcriptase
Database Link:	Entrez Gene 7015 Human Q14746

[View online »](#)

Background:

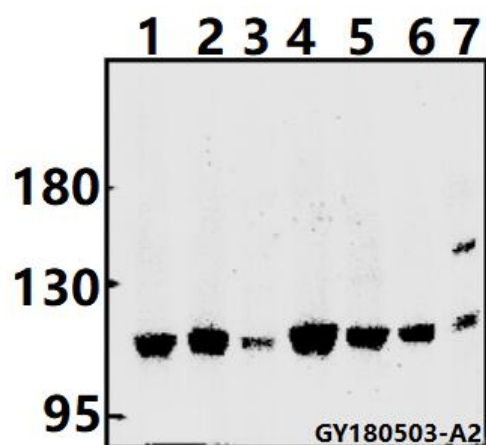
Telomerase is an RNA-dependent DNA polymerase that catalyzes the addition of telomeric repeat sequences to chromosome ends. In most human somatic cells, telomerase activity is undetectable, and telomeres shorten with successive cell divisions. However, telomerase activity is detectable in immortal cells and in many human tumors. Two candidate mammalian telomerase proteins have been cloned. Human TP1 (for telomerase-associated protein 1), also designated TLP1 in rat (for telomerase protein component 1), is homologous to the Tetrahymena p80 telomerase protein and has been shown to interact with mammalian telomerase RNA. Human TERT (for telomerase reverse transcriptase), also designated hEST2 (for ever shorter telomeres), is homologous to the p123 telomerase protein from Euplotes and to the yeast Est2 protein. Expression of TERT mRNA has been shown to correlate with telomerase activity in various cell lines.

Synonyms:

EST2; HEST2; TCS1; Telomerase-associated protein 2; Telomerase catalytic subunit; Telomerase reverse transcriptase; TERT; TP2; TRT

Note:

For research use only, not for use in diagnostic procedure.

Product images:


Western blot (WB) analysis of TERT (phospho-S824) polyclonal antibody at 1:500 dilution
 Lane1:A549 whole cell lysate(40ug) Lane2:H1792 whole cell lysate(40ug) Lane3:HepG2 whole cell lysate(40ug) Lane4:Panc1 whole cell lysate(40ug) Lane5:K562 whole cell lysate(40ug) Lane6: The Thymus tissue lysate of Rat(40ug) Lane7: The Lung tissue lysate of Mouse(40ug)