

Product datasheet for **TA392659S**

TAK1 (MAP3K7) Rabbit Polyclonal Antibody

Product data:

Product Type:	Primary Antibodies
Applications:	WB
Recommended Dilution:	WB:1:500~1:1000
Reactivity:	Human, Mouse, Rat
Host:	Rabbit
Isotype:	IgG
Clonality:	Polyclonal
Immunogen:	Synthetic phosphopeptide derived from human Tak1 around the phosphorylation site of Threonine 184.
Specificity:	Tak1 (phospho-T184) polyclonal antibody detects endogenous levels of Tak1 protein when phosphorylated at Thr184.
Formulation:	Rabbit IgG, 1mg/ml in PBS with 0.02% sodium azide, 50% glycerol, pH7.2
Concentration:	1mg/ml
Conjugation:	Unconjugated
Storage:	Store at 4°C short term. Aliquot and store at -20°C long term. Avoid freeze-thaw cycles.
Stability:	1 year
Predicted Protein Size:	~70, 82 kDa
Gene Name:	mitogen-activated protein kinase kinase kinase 7
Database Link:	Entrez Gene 6885 Human O43318



[View online »](#)

Background:

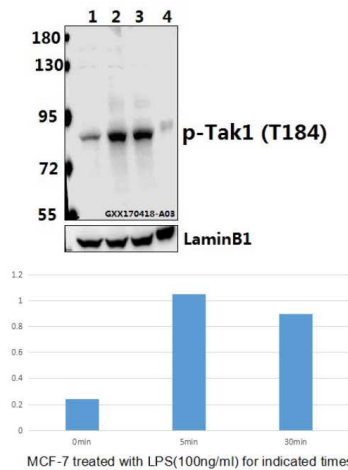
Several serine/threonine protein kinases have been implicated as intermediates in signal transduction pathways. These include ERK/MAP kinases, ribosomal S6 kinase (Rsk) and Raf-1. Raf-1 is a protein with intrinsic kinase activity towards serine/threonine residues and that is widely expressed in many tissue types and cell lines. Raf-1 activation is dependent on the small molecular weight GTPase Ras, but the means by which this activation occurs is poorly understood. Two proteins putatively involved in this process are Ksr-1 and Tak1. Ksr-1 (kinase suppressor of Ras) is a novel Raf-related protein kinase whose function is required for Ras signal transduction. Whether Ksr-1 lies directly downstream of Ras or acts in a parallel pathway is not yet known. Tak1 (TGFβ-activated kinase) has been shown to participate in the activation of the MAP kinase family in response to TGFβ stimulation.

Synonyms:

MAP3K7; Mitogen-activated protein kinase kinase kinase 7; TAK1; TGF-beta-activated kinase 1; Transforming growth factor-beta-activated kinase 1

Note:

For research use only, not for use in diagnostic procedure.

Product images:


Western blot (WB) analysis of Tak1 (phospho-T184) polyclonal antibody at 1:500 dilution
 Lane1:MCF-7 whole cell lysate Lane2:MCF-7 treated with LPS(100ng/ml) for 5 minutes whole cell lysate Lane3:MCF-7 treated with LPS(100ng/ml) for 30 minutes whole cell lysate Lane4:The Spleen tissue lysate of Mouse(40ug)