

## Product datasheet for **TA392653S**

### PKC alpha (PRKCA) Rabbit Polyclonal Antibody

#### Product data:

Product Type:	Primary Antibodies
Applications:	WB
Recommended Dilution:	WB: 1:500~1:1000 IHC: 1:50~1:200 IP: 1:10~1:100
Reactivity:	Human, Mouse, Rat
Host:	Rabbit
Isotype:	IgG
Clonality:	Polyclonal
Immunogen:	Synthetic phosphopeptide derived from human PKC $\alpha$ around the phosphorylation site of Threonine 638.
Specificity:	PKC $\alpha$ (phospho-T638) polyclonal antibody detects endogenous levels of PKC $\alpha$ protein when phosphorylated at Thr638.
Formulation:	Rabbit IgG, 1mg/ml in PBS with 0.02% sodium azide, 50% glycerol, pH7.2
Concentration:	1mg/ml
Conjugation:	Unconjugated
Storage:	Store at 4°C short term. Aliquot and store at -20°C long term. Avoid freeze-thaw cycles.
Stability:	1 year
Predicted Protein Size:	~ 80 kDa
Gene Name:	protein kinase C alpha
Database Link:	<a href="#">Entrez Gene 5578 Human P17252</a>



[View online »](#)

**Background:**

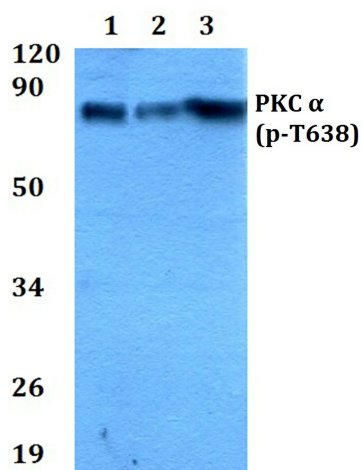
Members of the protein kinase C (PKC) family play a key regulatory role in a variety of cellular functions including cell growth and differentiation, gene expression, hormone secretion and membrane function. PKCs were originally identified as serine/threonine protein kinases whose activity was dependent on calcium and phospholipids. Diacylglycerols (DAG) and tumor promoting phorbol esters bind to and activate PKC. PKCs can be subdivided into at least two major classes including conventional (c) PKC isoforms ( $\alpha$ ,  $\beta$ I,  $\beta$ II and  $\gamma$ ) and novel (n) PKC isoforms ( $\delta$ ,  $\epsilon$ ,  $\zeta$ ,  $\eta$  and  $\theta$ ). Patterns of expression for each PKC isoform differ among tissues and PKC family members exhibit clear differences in their cofactor dependencies. For instance, the kinase activities of nPKC  $\delta$  and  $\epsilon$  are independent of  $Ca^{2+}$ .

**Synonyms:**

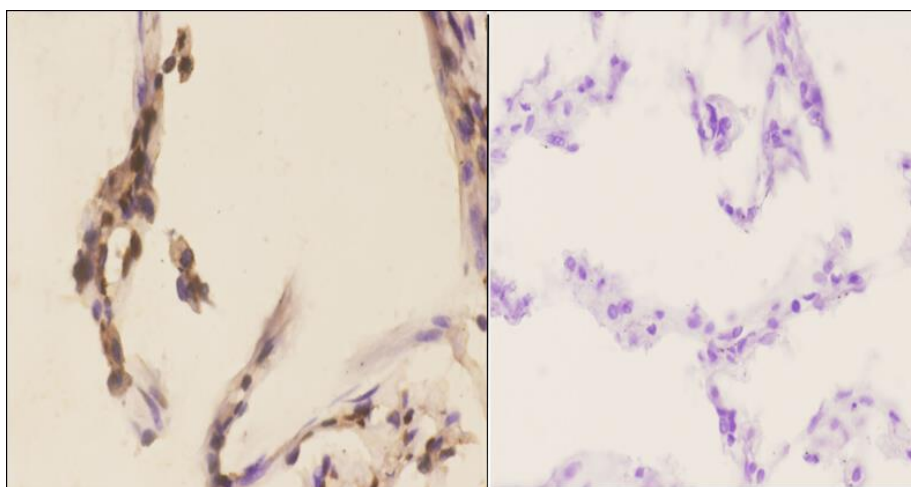
PKC-A; PKC-alpha; PKCA; PRKACA; PRKCA; Protein kinase C alpha type

**Note:**

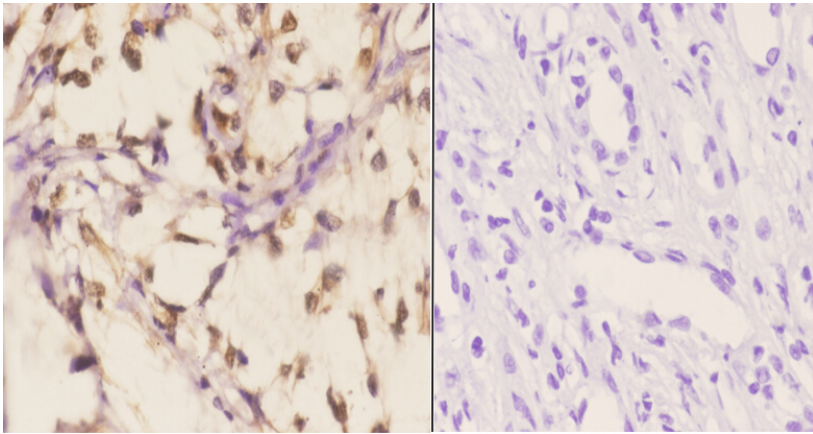
For research use only, not for use in diagnostic procedure.

**Product images:**


Western blot (WB) analysis of PKC  $\alpha$  (phospho-T638) polyclonal antibody at 1:500 dilution  
 Lane1:PC12 whole cell lysate(40ug) Lane2:CT26 whole cell lysate(40ug) Lane3:MCF-7 treated with LPS(100ng/ml) for 30 minutes whole cell lysate  
 Lane4:MCF-7 treated with LPS(100ng/ml) for 5 minutes whole cell lysate Lane5:MCF-7 whole cell lysate



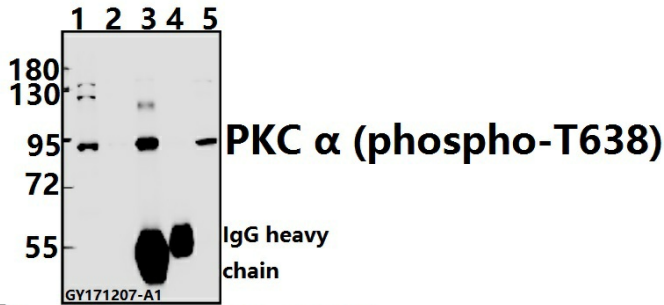
Immunohistochemistry (IHC) analyzes of p-PKC  $\alpha$  (T638) pAb in paraffin-embedded human lung carcinoma tissue at 1:50.showing cytoplasmic and nucleus staining. Negative control (the right)Using PBS instead of primary antibody, secondary antibody is Goat Anti-Rabbit IgG-biotin followed by avidin-peroxidase.



AP0290  
Lot AA00111

Immunoprecipitation of L02 cell lysate using PKC α (phospho-T638) pAb (Sepharose Bead Conjugate) #BD0048(lane 2 and lane 3) and Nonspecific IgG Control (Sepharose Bead Conjugate)#BD0047 (lane 4) .Lane 1 is 30% input. The western blot was probed using SHP-2 (E574) pAb #[TA392653].“↑”supernatant; “↓”deposition

**WB:**



**IP:**

-	+	+	-	-	PKC α ( AP0290 )
-	-	-	+	+	IgG(Rabbit)
-	+	+	+	+	ProteinG-Agarose
	↑	↓	↓	↑	

Immunoprecipitation of L02 cell lysate using PKC α (phospho-T638) pAb (Sepharose Bead Conjugate) #BD0048(lane 2 and lane 3) and Nonspecific IgG Control (Sepharose Bead Conjugate)#BD0048 (lane 4) .Lane 1 is 30% input. The western blot was probed using SHP-2 (E574) pAb #[TA392653].“↑”supernatant; “↓”deposition