

Product datasheet for **TA392652S**

MSK1 (RPS6KA5) Rabbit Polyclonal Antibody

Product data:

Product Type:	Primary Antibodies
Applications:	WB
Recommended Dilution:	WB: 1:500~1:1000
Reactivity:	Human, Mouse, Rat
Host:	Rabbit
Isotype:	IgG
Clonality:	Polyclonal
Immunogen:	Synthetic phosphopeptide derived from human MSK1 around the phosphorylation site of Serine 360.
Specificity:	MSK1 (phospho-S360) polyclonal antibody detects endogenous levels of MSK1 only when phosphorylated at Ser360.
Formulation:	Rabbit IgG, 1mg/ml in PBS with 0.02% sodium azide, 50% glycerol, pH7.2
Concentration:	1mg/ml
Conjugation:	Unconjugated
Storage:	Store at 4°C short term. Aliquot and store at -20°C long term. Avoid freeze-thaw cycles.
Stability:	1 year
Predicted Protein Size:	~ 90 kDa
Gene Name:	ribosomal protein S6 kinase A5
Database Link:	Entrez Gene 9252 Human O75582



[View online »](#)

Background:

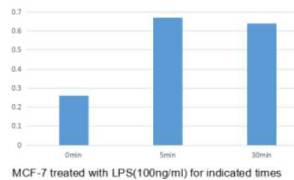
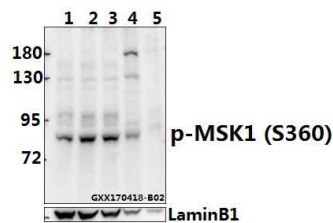
MSK-1 is a mitogen and stress activated protein kinase-1 which belongs to the AGC family of kinases and is related in structure to the ribosomal p70 S6 kinase subfamily. MSK-1 can be activated by ERK1/2 and SAPK2 /p38 MAP kinase. It is also known to be required for the phosphorylation of CREB, ATF1 H3 and HMG-14 in response to mitogen and stress. Similar to RSK, MSK-1 contains two kinase domains (N-term and a C-term). Once phosphorylated on Thr581 and Ser360 by ERK1/2 and SAPK2/p38, MSK-1 autophosphorylates on at least 5 sites. Of these autophosphorylation sites Ser212 and Ser376 get phosphorylated by the C-terminal kinase domain of MSK-1 which is essential for the catalytic activity of the N-terminal kinase domain.

Synonyms:

90 kDa ribosomal protein S6 kinase 5; MSK1; Nuclear mitogen- and stress-activated protein kinase 1; Ribosomal protein S6 kinase alpha-5; RPS6KA5; RSK-like protein kinase; RSKL; S6K-alpha-5

Note:

For research use only, not for use in diagnostic procedure.

Product images:


Western blot (WB) analysis of p-MSK1 (S360) polyclonal antibody at 1:500 dilution Lane1:MCF-7 whole cell lysate Lane2:MCF-7 treated with LPS(100ng/ml) for 5 minutes whole cell lysate Lane3:MCF-7 treated with LPS(100ng/ml) for 30 minutes whole cell lysate Lane4:AML-12 whole cell lysate(40ug) Lane5:H9C2 whole cell lysate(40ug)