

## Product datasheet for **TA392650S**

### FYN Rabbit Polyclonal Antibody

#### Product data:

|                         |  |
|-------------------------|--|
| Product Type:           | Primary Antibodies   |
| Applications:           | WB   |
| Recommended Dilution:   | WB: 1:500~1:1000   |
| Reactivity:             | Human, Mouse, Rat  |
| Host:                   | Rabbit   |
| Isotype:                | IgG  |
| Clonality:              | Polyclonal   |
| Immunogen:              | Synthetic phosphopeptide derived from human Fyn around the phosphorylation site of Tyrosine 530.   |
| Specificity:            | p-Fyn (Y530) polyclonal antibody detects endogenous levels of Fyn protein only when phosphorylated at Tyr530.  |
| Formulation:            | Rabbit IgG, 1mg/ml in PBS with 0.02% sodium azide, 50% glycerol, pH7.2   |
| Concentration:          | 1mg/ml   |
| Conjugation:            | Unconjugated   |
| Storage:                | Store at 4°C short term. Aliquot and store at -20°C long term. Avoid freeze-thaw cycles.   |
| Stability:              | 1 year   |
| Predicted Protein Size: | ~ 59 kDa   |
| Gene Name:              | FYN proto-oncogene, Src family tyrosine kinase   |
| Database Link:          | <a href="#">Entrez Gene 2534 Human P06241</a>  |
| Background:             | Fyn is a membrane-associated, non-receptor protein tyrosine kinase approximately 59kDa, which belongs to the Src family of cytoplasmic tyrosine kinases. Fyn is very strongly similar to mouse Fyn, v-yes and c-src. Fyn is expressed predominately in tissues of neuronal and hematopoietic origin. Neuronal Fyn and hematopoietic Fyn differ at the junction of the SH2 and kinase domains due to tissue specific alternative splicing. Fyn has been shown to be involved in B cell and T cell activation as well as keratinocyte differentiation. In T cells, Fyn associates with the T-cell antigen receptor and Thy1. |

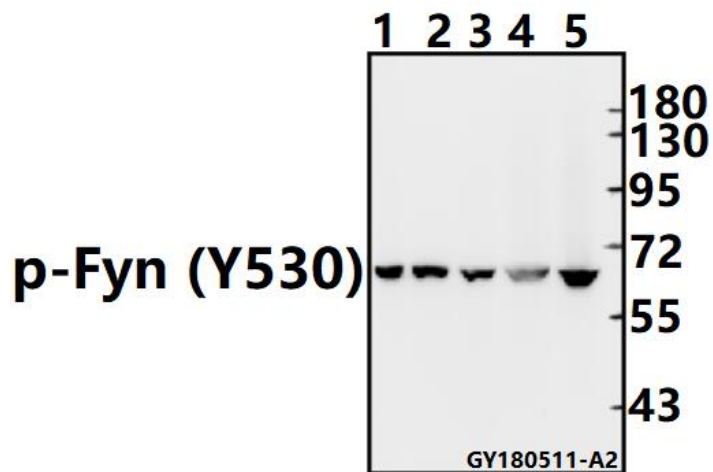


[View online »](#)

**Synonyms:** FYN; p59-Fyn; Proto-oncogene c-Fyn; Proto-oncogene Syn; SLK; Src-like kinase; Tyrosine-protein kinase Fyn

**Note:** For research use only, not for use in diagnostic procedure.

**Product images:**



Western blot (WB) analysis of p-Fyn (Y530) pAb at 1:500 dilution Lane1:HEK293T whole cell lysate(10ug) Lane2:U-87MG whole cell lysate(10ug) Lane3:HepG2 whole cell lysate(20ug) Lane4:C6 whole cell lysate(40ug) Lane5:BV2 whole cell lysate(40ug)