

Product datasheet for **TA392648**

STAT3 Rabbit Polyclonal Antibody

Product data:

Product Type:	Primary Antibodies
Applications:	WB
Recommended Dilution:	WB:1:500~1:1000
Reactivity:	Human, Mouse, Rat
Host:	Rabbit
Isotype:	IgG
Clonality:	Polyclonal
Immunogen:	Synthetic phosphopeptide derived from human Stat3 around the phosphorylation site of Tyrosine 705.
Specificity:	p-Stat3 (Y705) polyclonal antibody detects endogenous levels of Stat3 protein only when phosphorylated at Tyr705.
Formulation:	Rabbit IgG, 1mg/ml in PBS with 0.02% sodium azide, 50% glycerol, pH7.2
Concentration:	1mg/ml
Conjugation:	Unconjugated
Storage:	Store at 4°C short term. Aliquot and store at -20°C long term. Avoid freeze-thaw cycles.
Stability:	1 year
Predicted Protein Size:	~ 88 kDa
Gene Name:	signal transducer and activator of transcription 3
Database Link:	Entrez Gene 6774 Human P40763



[View online »](#)

Background:

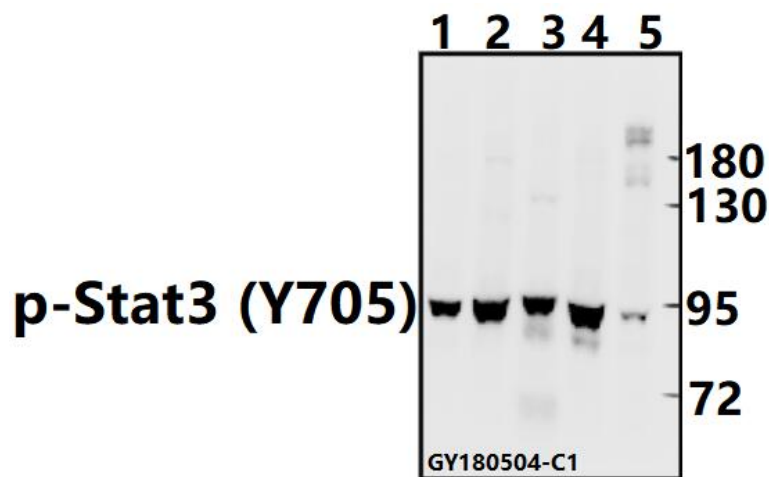
Membrane receptor signaling by various ligands, including interferons and growth hormones such as EGF, induces activation of Jak kinases which then leads to tyrosine phosphorylation of the various Stat transcription factors. Stat1 and Stat2 are induced by IFN- α and form a heterodimer which is part of the ISGF3 transcription factor complex. Although early reports indicate Stat3 activation by EGF and IL-6, it has been shown that Stat3 β appears to be activated by both while Stat3 α is activated by EGF, but not by IL-6. Highest expression of Stat4 is seen in testis and myeloid cells. IL-12 has been identified as an activator of Stat4. Stat5 has been shown to be activated by prolactin and by IL-3. Stat6 is involved in IL-4 activated signaling pathways.

Synonyms:

Acute-phase response factor; APRF; Signal transducer and activator of transcription 3; STAT-3

Note:

For research use only, not for use in diagnostic procedure.

Product images:

Western blot (WB) analysis of p-Stat3 (Y705) pAb at 1:500 dilution Lane1:U-87MG whole cell lysate(40ug) Lane2:H9C2 whole cell lysate(40ug) Lane3:The Embryo tissue lysate of Mouse(40ug) Lane4:A375 whole cell lysate(40ug) Lane5:HepG2 whole cell lysate(40ug)