

## Product datasheet for **TA392645S**

### Nucleophosmin (NPM1) Rabbit Polyclonal Antibody

#### Product data:

Product Type:	Primary Antibodies
Applications:	WB
Recommended Dilution:	WB: 1:500~1:1000
Reactivity:	Human, Mouse, Rat
Host:	Rabbit
Isotype:	IgG
Clonality:	Polyclonal
Immunogen:	Synthetic phosphopeptide derived from human NPM around the phosphorylation site of Threonine 199.
Specificity:	p-NPM (T199) polyclonal antibody detects endogenous levels of NPM protein only when phosphorylated at Thr199.
Formulation:	Rabbit IgG, 1mg/ml in PBS with 0.02% sodium azide, 50% glycerol, pH7.2
Concentration:	1mg/ml
Conjugation:	Unconjugated
Storage:	Store at 4°C short term. Aliquot and store at -20°C long term. Avoid freeze-thaw cycles.
Stability:	1 year
Predicted Protein Size:	~ 38 kDa
Gene Name:	nucleophosmin (nucleolar phosphoprotein B23, numatrin)
Database Link:	<a href="#">Entrez Gene 4869 Human P06748</a>
Background:	Nucleophosmin (NPM; also known as B23, numatrin or NO38) is an abundant phosphoprotein primarily found in nucleoli. It has been implicated in several distinct cellular functions, including assembly and transport of ribosomes, cytoplasmic/nuclear trafficking, regulation of DNA polymerase $\alpha$ activity, centrosome duplication and molecular chaperoning activities. The NPM gene is also known for its fusion with the anaplastic lymphoma kinase (ALK) receptor tyrosine kinase. The NPM portion contributes to transformation by providing a dimerization domain, which results in activation of the fused kinase.

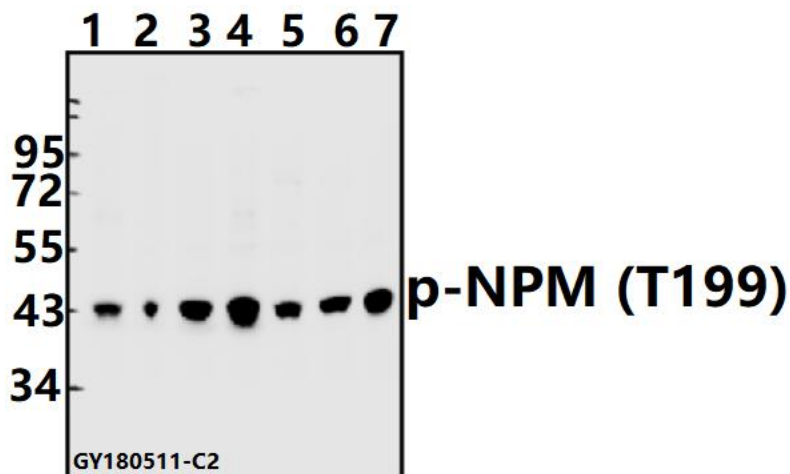


[View online »](#)

**Synonyms:** NPM; NPM1; Nucleolar phosphoprotein B23; Nucleolar protein NO38; Nucleophosmin; Numatrin

**Note:** For research use only, not for use in diagnostic procedure.

**Product images:**



Western blot (WB) analysis of p-NPM (T199) pAb at 1:500 dilution Lane1:H1792 whole cell lysate(40ug) Lane2:A549 whole cell lysate(40ug) Lane3:SGC7901 whole cell lysate(40ug) Lane4:EC9706 whole cell lysate(40ug) Lane5:PC12 whole cell lysate(40ug) Lane6:CT26 whole cell lysate(40ug) Lane7:HEK293T whole cell lysate(40ug)