

## Product datasheet for **TA392644S**

### **MSK1 (RPS6KA5) Rabbit Polyclonal Antibody**

#### **Product data:**

Product Type:	Primary Antibodies
Applications:	WB
Recommended Dilution:	WB: 1:500~1:2000
Reactivity:	Human, Mouse, Rat
Host:	Rabbit
Isotype:	IgG
Clonality:	Polyclonal
Immunogen:	Synthetic phosphopeptide derived from human MSK1 around the phosphorylation site of Threonine 581.
Specificity:	p-MSK1(Thr581) polyclonal antibody detects endogenous levels of MSK1 protein when phosphorylated at Thr581.
Formulation:	Rabbit IgG, 1mg/ml in PBS with 0.02% sodium azide, 50% glycerol, pH7.2
Concentration:	1mg/ml
Conjugation:	Unconjugated
Storage:	Store at 4°C short term. Aliquot and store at -20°C long term. Avoid freeze-thaw cycles.
Stability:	1 year
Predicted Protein Size:	~ 90 kDa
Gene Name:	ribosomal protein S6 kinase A5
Database Link:	<a href="#">Entrez Gene 9252 Human O75582</a>



[View online »](#)

**Background:**

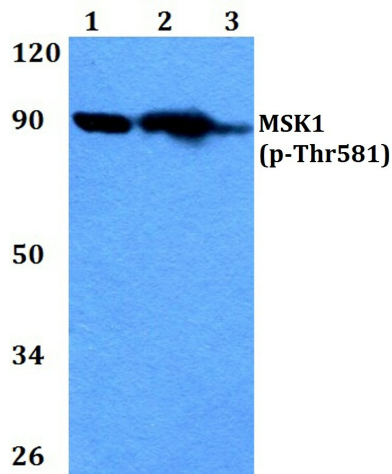
MSK-1 is a mitogen and stress activated protein kinase-1 which belongs to the AGC family of kinases and is related in structure to the ribosomal p70 S6 kinase subfamily. MSK-1 can be activated by ERK1/2 and SAPK2 /p38 MAP kinase. It is also known to be required for the phosphorylation of CREB, ATF1 H3 and HMG-14 in response to mitogen and stress. Similar to RSK, MSK-1 contains two kinase domains (N-term and a C-term). Once phosphorylated on Thr581 and Ser360 by ERK1/2 and SAPK2/p38, MSK-1 autophosphorylate on at least 5 sites. Of these autophosphorylation sites Ser212 and Ser376 get phosphorylated by the C-terminal kinase domain of MSK-1 which is essential for the catalytic activity of the N-terminal kinase domain.

**Synonyms:**

90 kDa ribosomal protein S6 kinase 5; MSK1; Nuclear mitogen- and stress-activated protein kinase 1; Ribosomal protein S6 kinase alpha-5; RPS6KA5; RSK-like protein kinase; RSKL; S6K-alpha-5

**Note:**

For research use only, not for use in diagnostic procedure.

**Product images:**

Western blot (WB) analysis of p-MSK1(Thr581) polyclonal antibody at 1:500 or 1:2000 dilution. Lane 1: H9C2 treated with LPS(40ng/ml) for 45min whole cell lysate. Lane 2: H9C2 treated with LPS(40ng/ml) for 15min whole cell lysate. Lane 3: H9C2 treated with LPS(40ng/ml) for 5min whole cell lysate. Lane 4: L02 treated with LPS(40ng/ml) for 45min whole cell lysate. Lane 5: L02 treated with LPS(40ng/ml) for 15min whole cell lysate. Lane 6: L02 whole cell lysate. Lane 7: The Brain tissue lysate of Mouse(40ug).