

Product datasheet for **TA392642S**

SIRT2 Rabbit Polyclonal Antibody

Product data:

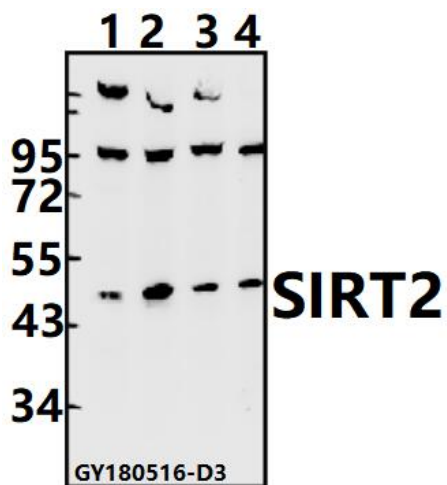
Product Type:	Primary Antibodies
Applications:	WB
Recommended Dilution:	WB: 1:500~1:1000
Reactivity:	Human, Mouse, Rat
Host:	Rabbit
Isotype:	IgG
Clonality:	Polyclonal
Immunogen:	Synthetic peptide, corresponding to amino acids 330-380 of Human SIRT2.
Specificity:	SIRT2 polyclonal antibody detects endogenous levels of SIRT2 protein.
Formulation:	Rabbit IgG, 1mg/ml in PBS with 0.02% sodium azide, 50% glycerol, pH7.2
Concentration:	1mg/ml
Conjugation:	Unconjugated
Storage:	Store at 4°C short term. Aliquot and store at -20°C long term. Avoid freeze-thaw cycles.
Stability:	1 year
Predicted Protein Size:	~ 43 kDa
Gene Name:	sirtuin 2
Database Link:	Entrez Gene 22933 Human Q8IXJ6
Background:	SIRT2 is a member of the sirtuin family of proteins. Studies suggest that the human sirtuins may function as intracellular regulatory proteins with mono-ADP-ribosyltransferase activity. SIRT2 interacts with HDAC6, suggesting that these proteins belong to a large complex that deacetylate the cytoskeleton. SIRT2 is a NAD-dependent deacetylase, which deacetylates the 'Lys-40' of alpha-tubulin. Involved in the control of mitotic exit in the cell cycle, probably via its role in the regulation of cytoskeleton. Despite some ability to deacetylate histones in vitro, it is unlikely in vivo.
Synonyms:	NAD-dependent protein deacetylase sirtuin-2; Regulatory protein SIR2 homolog 2; SIR2-like protein 2; SIR2L; SIR2L2; SIRT2



[View online »](#)

Note: For research use only, not for use in diagnostic procedure.

Product images:



Western blot (WB) analysis of SIRT2 pAb at 1:500 dilution Lane1:U-87MG whole cell lysate(40ug) Lane2:PC12 whole cell lysate(40ug) Lane3:AML-12 whole cell lysate(40ug) Lane4:HEK293T whole cell lysate(40ug)