

Product datasheet for **TA392641M**

HSP27 (HSPB1) Rabbit Polyclonal Antibody

Product data:

| | |
|-------------------------|---|
| Product Type: | Primary Antibodies |
| Applications: | WB |
| Recommended Dilution: | WB: 1:500~1:1000 |
| Reactivity: | Human |
| Host: | Rabbit |
| Isotype: | IgG |
| Clonality: | Polyclonal |
| Immunogen: | Synthetic phosphopeptide derived from human HSP27 around the phosphorylation site of Serine 82. |
| Specificity: | HSP27 (phospho-S82) polyclonal antibody detects endogenous levels of HSP27 protein only when phosphorylated at Ser82. |
| Formulation: | Rabbit IgG, 1mg/ml in PBS with 0.02% sodium azide, 50% glycerol, pH7.2 |
| Concentration: | 1mg/ml |
| Conjugation: | Unconjugated |
| Storage: | Store at 4°C short term. Aliquot and store at -20°C long term. Avoid freeze-thaw cycles. |
| Stability: | 1 year |
| Predicted Protein Size: | ~ 27 kDa |
| Gene Name: | heat shock protein family B (small) member 1 |
| Database Link: | Entrez Gene 3315 Human P04792 |



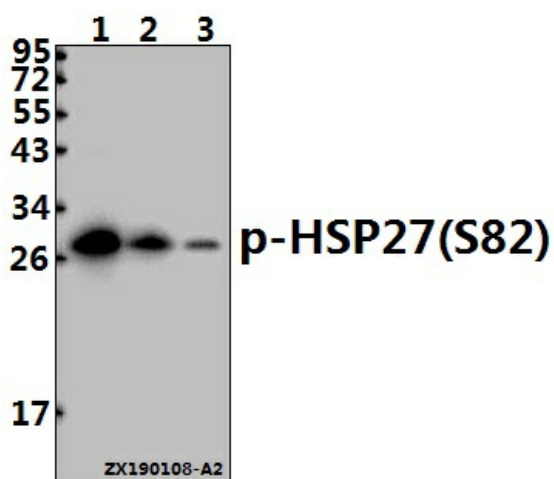
[View online »](#)

Background: Hsp27, also referred to as the Estrogen-Regulated 24K protein and HSP28, is one of several small heat shock proteins (HSP) produced by all organisms studied. Hsp27 synthesis is induced by elevated temperature, as well as estrogen in hormone responsive cells. This protein is involved in stress resistance and actin organization. Interestingly, human HSP27 also shares greater than 50% homology with low molecular weight *Drosophila* HSP's and mammalian a-crystalline lens protein. Because of the estrogen-responsive nature of Hsp27, this protein has been studied extensively in human estrogen-responsive tissues such as cervix, endometrium and breast tissue. This work has led to the suggestion that Hsp27 may be a useful marker in classifying various hormone sensitive tumors.

Synonyms: 28 kDa heat shock protein; Estrogen-regulated 24 kDa protein; Heat shock 27 kDa protein; Heat shock protein beta-1; HSP 27; HSP27; HSP28; HSPB1; HspB1; SRP27; Stress-responsive protein 27

Note: For research use only, not for use in diagnostic procedure.

Product images:



Western blot (WB) analysis of p-HSP27(S82) pAb at 1:500 dilution Lane1:HepG2 whole cell lysate(40ug) Lane2:SK-OVCAR3 whole cell lysate(40ug) Lane3:A375 whole cell lysate(40ug)