

Product datasheet for **TA392639S**

RPL26L1 Rabbit Polyclonal Antibody

Product data:

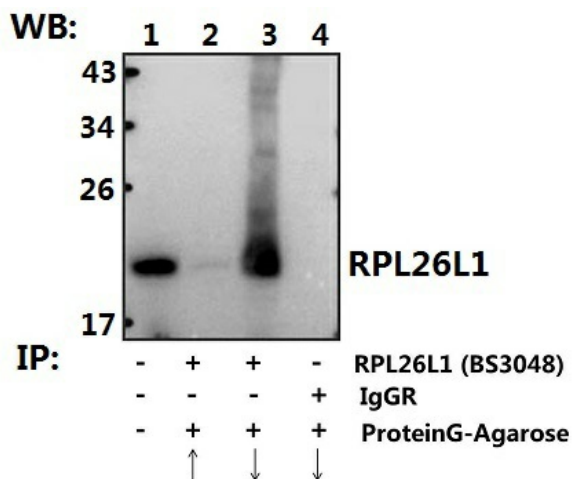
Product Type:	Primary Antibodies
Applications:	WB
Recommended Dilution:	WB: 1:500~1:1000 IP: 1:10~1:100
Reactivity:	Human, Mouse, Rat
Host:	Rabbit
Isotype:	IgG
Clonality:	Polyclonal
Immunogen:	Synthetic peptide, corresponding to amino acids 110-162 of Human RPL26L1.
Specificity:	RPL26L1 (E145) polyclonal antibody detects endogenous levels of RPL26L1 protein.
Formulation:	Rabbit IgG, 1mg/ml in PBS with 0.02% sodium azide, 50% glycerol, pH7.2
Concentration:	1mg/ml
Conjugation:	Unconjugated
Storage:	Store at 4°C short term. Aliquot and store at -20°C long term. Avoid freeze-thaw cycles.
Stability:	1 year
Predicted Protein Size:	~ 20 kDa
Gene Name:	ribosomal protein L26 like 1
Database Link:	Entrez Gene 51121 Human Q9UNX3
Background:	Ribosomes, the organelles that catalyze protein synthesis, are composed of a small subunit (40S) and a large subunit (60S) that consist of over 80 distinct ribosomal proteins. Mammalian ribosomal proteins are encoded by multigene families that contain processed pseudogenes and one functional intron-containing gene within their coding regions. Ribosomal Protein L26 (also known as RPL26) and Ribosomal Protein L26L1 (also known as RPL26L1) are 145 amino acid proteins that belong to the ribosomal protein family and may play a role in protein synthesis. Like most ribosomal proteins, Ribosomal Protein L26 exists as multiple processed pseudogenes that are scattered throughout the genome.
Synonyms:	60S ribosomal protein L26-like 1; Ribosomal Protein L26L; RPL26L1; RPL26P1



[View online »](#)

Note: For research use only, not for use in diagnostic procedure.

Product images:



Immunoprecipitation of Testis tissue lysate of Mouse using RPL26L1 (E145) polyclonal antibody (Sepharose Bead Conjugate) #BD0048(lane 2 and lane 3) .Lane 1 is 30% input.The western blot was probed using RPL26L1 (E145) # [TA392639]. "↑"supernatant;"↓(deposition"