

Product datasheet for **TA392638S**

Nrf2 (NFE2L2) Rabbit Polyclonal Antibody

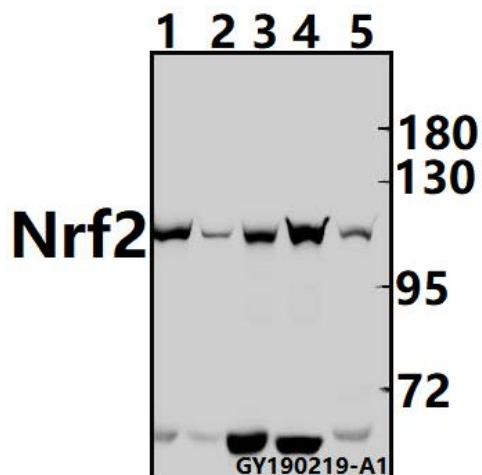
Product data:

Product Type:	Primary Antibodies
Applications:	WB
Recommended Dilution:	WB: 1:500~1:1000 IHC: 1:50~1:200
Reactivity:	Human, Mouse, Rat
Host:	Rabbit
Isotype:	IgG
Clonality:	Polyclonal
Immunogen:	Synthetic peptide, corresponding to amino acids 560-621 of Human Nrf2.
Specificity:	Nrf2/NFE2L2 (L593) polyclonal antibody detects endogenous levels of Nrf2/NFE2L2 protein.
Formulation:	Rabbit IgG, 1mg/ml in PBS with 0.02% sodium azide, 50% glycerol, pH7.2
Concentration:	1mg/ml
Conjugation:	Unconjugated
Storage:	Store at 4°C short term. Aliquot and store at -20°C long term. Avoid freeze-thaw cycles.
Stability:	1 year
Predicted Protein Size:	~ 100 kDa
Gene Name:	nuclear factor, erythroid 2 like 2
Database Link:	Entrez Gene 4780 Human Q16236
Background:	Nuclear factor erythroid 2-related factor 2 (Nrf2) is a transcription factor which regulates the expression of many detoxification and antioxidant enzymes. Nrf2 can potentially play a significant role in adaptive responses to oxidative stress. Nrf2 belongs to the Cap N Collar (CNC-bZIP subfamily of basic /leucine zipper (bZIP) transcription factors.
Synonyms:	HEBP1; NF-E2-related factor 2; NFE2-related factor 2; NFE2L2; NRF2; Nuclear factor erythroid 2-related factor 2
Note:	For research use only, not for use in diagnostic procedure.

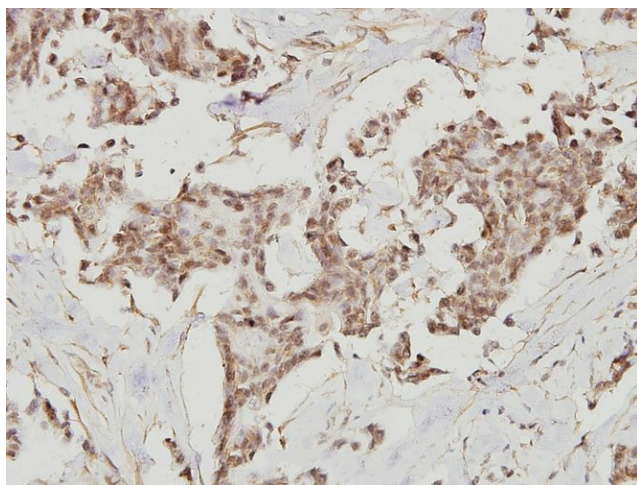


[View online »](#)

Product images:



Western blot (WB) analysis of Nrf2 (L593) pAb at 1:500 dilution Lane1:AML-12 whole cell lysate(40ug) Lane2:PC12 whole cell lysate(40ug) Lane3:Myla2059 whole cell lysate(40ug) Lane4:SGC7901 whole cell lysate(40ug) Lane5:Hela whole cell lysate(40ug)



Immunohistochemistry (IHC) analyzes of Nrf2 (L593) pAb in paraffin-embedded human breast carcinoma tissue at 1:100.