

## Product datasheet for **TA392638**

### **Nrf2 (NFE2L2) Rabbit Polyclonal Antibody**

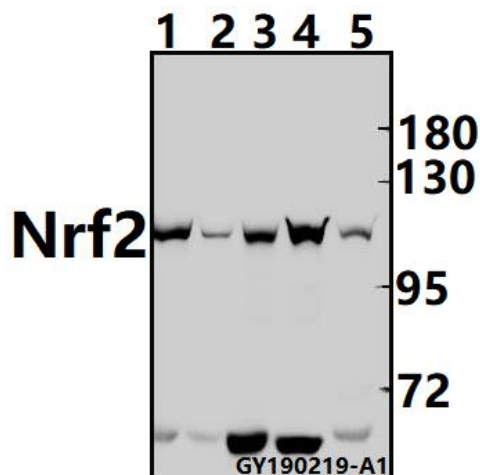
#### **Product data:**

<b>Product Type:</b>	Primary Antibodies
<b>Applications:</b>	WB
<b>Recommended Dilution:</b>	WB: 1:500~1:1000 IHC: 1:50~1:200
<b>Reactivity:</b>	Human, Mouse, Rat
<b>Host:</b>	Rabbit
<b>Isotype:</b>	IgG
<b>Clonality:</b>	Polyclonal
<b>Immunogen:</b>	Synthetic peptide, corresponding to amino acids 560-621 of Human Nrf2.
<b>Specificity:</b>	Nrf2/NFE2L2 (L593) polyclonal antibody detects endogenous levels of Nrf2/NFE2L2 protein.
<b>Formulation:</b>	Rabbit IgG, 1mg/ml in PBS with 0.02% sodium azide, 50% glycerol, pH7.2
<b>Concentration:</b>	1mg/ml
<b>Conjugation:</b>	Unconjugated
<b>Storage:</b>	Store at 4°C short term. Aliquot and store at -20°C long term. Avoid freeze-thaw cycles.
<b>Stability:</b>	1 year
<b>Predicted Protein Size:</b>	~ 100 kDa
<b>Gene Name:</b>	nuclear factor, erythroid 2 like 2
<b>Database Link:</b>	<a href="#">Entrez Gene 4780 Human Q16236</a>
<b>Background:</b>	Nuclear factor erythroid 2-related factor 2 (Nrf2) is a transcription factor which regulates the expression of many detoxification and antioxidant enzymes. Nrf2 can potentially play a significant role in adaptive responses to oxidative stress. Nrf2 belongs to the Cap N Collar (CNC-bZIP subfamily of basic /leucine zipper (bZIP) transcription factors.
<b>Synonyms:</b>	HEBP1; NF-E2-related factor 2; NFE2-related factor 2; NFE2L2; NRF2; Nuclear factor erythroid 2-related factor 2
<b>Note:</b>	For research use only, not for use in diagnostic procedure.

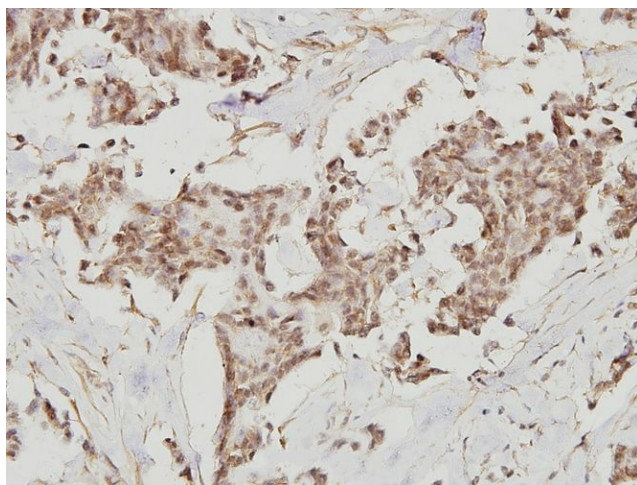


[View online »](#)

## Product images:



Western blot (WB) analysis of Nrf2 (L593) pAb at 1:500 dilution Lane1:AML-12 whole cell lysate(40ug) Lane2:PC12 whole cell lysate(40ug) Lane3:Myla2059 whole cell lysate(40ug) Lane4:SGC7901 whole cell lysate(40ug) Lane5:Hela whole cell lysate(40ug)



Immunohistochemistry (IHC) analysis of Nrf2 (L593) pAb in paraffin-embedded human breast carcinoma tissue at 1:100.