

## Product datasheet for **TA392636S**

### CD160 Rabbit Polyclonal Antibody

#### Product data:

Product Type:	Primary Antibodies
Applications:	WB
Recommended Dilution:	WB: 1:500~1:1000
Reactivity:	Human, Mouse, Rat
Host:	Rabbit
Isotype:	IgG
Clonality:	Polyclonal
Immunogen:	Synthetic peptide, corresponding to amino acids 21-70 of Human CD160.
Specificity:	CD160 (T45) polyclonal antibody detects endogenous levels of CD160 protein.
Formulation:	Rabbit IgG, 1mg/ml in PBS with 0.02% sodium azide, 50% glycerol, pH7.2
Concentration:	1mg/ml
Conjugation:	Unconjugated
Storage:	Store at 4°C short term. Aliquot and store at -20°C long term. Avoid freeze-thaw cycles.
Stability:	1 year
Predicted Protein Size:	~ 19 kDa
Gene Name:	CD160 molecule
Database Link:	<a href="#">Entrez Gene 11126 Human O95971</a>
Background:	CD160, also known as NK1, BY55 or NK28, is a 181 amino acid lipid-anchored cell membrane glycoprotein that contains one immunoglobulin-like domain. Expressed in small intestine, spleen and functional NK (natural killer) and T cytotoxic lymphocytes, CD160 exists as a disulfide-linked homomultimer that functions as a receptor for MHC (major histocompatibility complex) molecules and is thought to regulate the function of NK cells. Additionally, CD160 interacts with HVEM (herpesvirus entry mediator) and, via this interaction, is able to negatively regulate CD4+ T cell activation, indicating a role in immune system regulation. Multiple isoforms of CD160 exist due to alternative splicing events. The gene encoding CD160 maps to human chromosome 1, which spans 260 million base pairs, contains over 3,000 genes and comprises nearly 8% of the human genome.

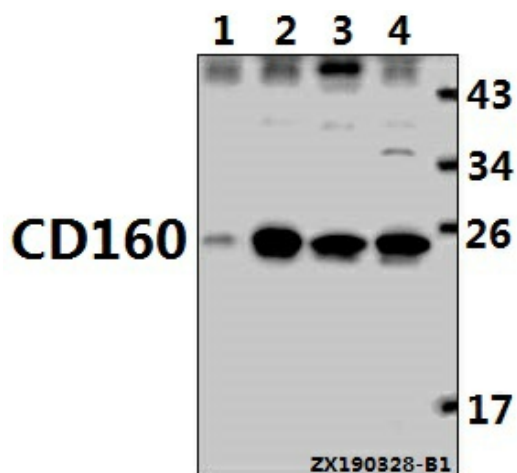


[View online »](#)

**Synonyms:** BY55; CD160; CD160 antigen; Natural killer cell receptor BY55

**Note:** For research use only, not for use in diagnostic procedure.

**Product images:**



Western blot (WB) analysis of CD160 pAb at 1:1000 dilution Lane1:RAW264.7 whole cell lysate(40ug) Lane2:K562 whole cell lysate(40ug) Lane3:Jurkat whole cell lysate(40ug) Lane4:Myla2059 whole cell lysate(40ug)