

Product datasheet for **TA392635S**

AK6 Rabbit Polyclonal Antibody

Product data:

Product Type:	Primary Antibodies
Applications:	WB
Recommended Dilution:	WB: 1:500~1:1000 IHC: 1:50~1:200 IP: 1:10~1:100
Reactivity:	Human, Mouse, Rat
Host:	Rabbit
Isotype:	IgG
Clonality:	Polyclonal
Immunogen:	Synthetic peptide, corresponding to the N-terminal of Human AK6.
Specificity:	AK6 (G35) polyclonal antibody detects endogenous levels of AK6 protein.
Formulation:	Rabbit IgG, 1mg/ml in PBS with 0.02% sodium azide, 50% glycerol, pH7.2
Concentration:	1mg/ml
Conjugation:	Unconjugated
Storage:	Store at 4°C short term. Aliquot and store at -20°C long term. Avoid freeze-thaw cycles.
Stability:	1 year
Predicted Protein Size:	~ 20 kDa
Gene Name:	adenylate kinase 6
Database Link:	Entrez Gene 102157402 Human Q9Y3D8
Background:	TAF9(AK6) functions as a component of the DNA-binding general transcription factor complex TFIID and the regulatory transcription complex SAGA. Binding of TFIID to a promoter (with or without TATA element) is the initial step in pre-initiation complex (PIC) formation. TFIID plays a key role in the regulation of gene expression by RNA polymerase II through different activities such as transcription activator interaction, core promoter recognition and selectivity, TFIIA and TFIIB interaction, chromatin modification (histone acetylation by TAF1), facilitation of DNA opening and initiation of transcription. SAGA influences RNA polymerase II transcriptional activity through different activities such as TBP interaction (SPT3 and SPT8) and promoter selectivity, interaction with transcription activators (GCN5, ADA2, ADA3, and TRA1), and chromatin modification through histone acetylation (GCN5).

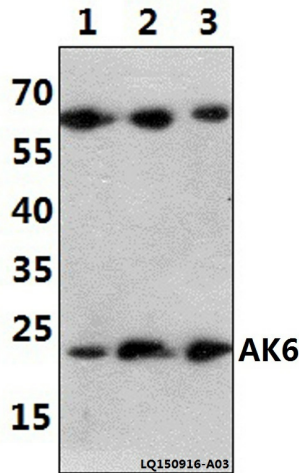


[View online »](#)

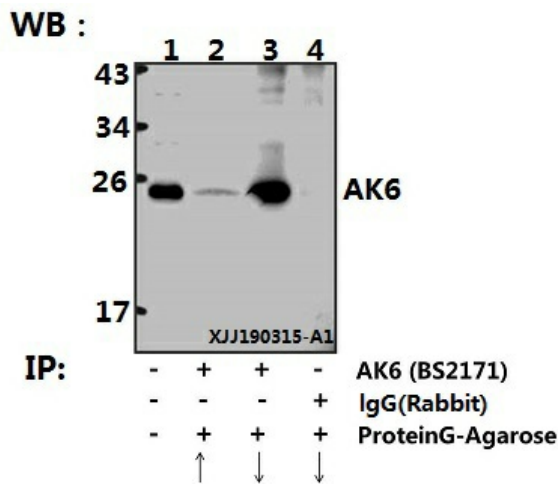
Synonyms: AD-004; Adenylate kinase isoenzyme 6; Adrenal gland protein AD-004; AK/ATPase; AK6; CGI-137; CINAP; Coilin-interacting nuclear ATPase protein; Dual activity adenylate kinase/ATPase; hCINAP

Note: For research use only, not for use in diagnostic procedure.

Product images:



Western blot (WB) analysis of AK6 (G35) polyclonal antibody at 1:1000 dilution
Lane1:A549 whole cell lysate(40ug) Lane2:The Lung tissue lysate of Rat(30ug) Lane3:The Lung tissue lysate of Mouse(30ug)



Immunoprecipitation of HEK293T cell lysate using AK6 (G35) polyclonal antibody (Sepharose Bead Conjugate) #BD0048(lane 2 and lane 3) and Nonspecific IgG Control (Sepharose Bead Conjugate) #BD0048 (lane 4).Lane 1 is 30% input.The western blot was probed using ATP5H (D146) # [TA392635]. "↑" "supernatant"; "↓" (deposition)