

## Product datasheet for **TA392628S**

### ROCK1 Rabbit Polyclonal Antibody

#### Product data:

Product Type:	Primary Antibodies
Applications:	WB
Recommended Dilution:	WB: 1:5000~1:10000 IP:1:2000~1:8000
Reactivity:	Human, Mouse, Rat
Host:	Rabbit
Isotype:	IgG
Clonality:	Polyclonal
Immunogen:	Recombinant protein of human Rock-1.
Specificity:	Rock-1 polyclonal antibody detects endogenous levels of Rock-1 protein.
Formulation:	Rabbit IgG, 1mg/ml in PBS with 0.02% sodium azide, 50% glycerol, pH7.2.
Concentration:	1mg/ml
Conjugation:	Unconjugated
Storage:	Store at 4°C short term. Aliquot and store at -20°C long term. Avoid freeze-thaw cycles.
Stability:	1 year
Predicted Protein Size:	~ 180kDa
Gene Name:	Rho associated coiled-coil containing protein kinase 1
Database Link:	<a href="#">Entrez Gene 6093 Human Q13464</a>
Background:	ROCK (Rho-associated kinase), a family of serine/threonine kinases, is an important downstream target of Rho-GTPase and plays an important role in Rho-mediated signaling. Two isoforms of ROCK have been identified: ROCK1 and ROCK2. ROCK is composed of N-terminal catalytic, coiled-coil, and C-terminal PH (pleckstrin homology) domains. The C-terminus of ROCK negatively regulates its kinase activity. Caspase-3-induced cleavage of ROCK1 and direct cleavage of ROCK2 by granzyme B (grB) activates ROCK and leads to phosphorylation of myosin light chain and inhibition of myosin phosphatase. This phosphorylation may account for the mechanism by which Rho regulates cytokinesis, cell motility, cell membrane blebbing during apoptosis, and smooth muscle contraction.

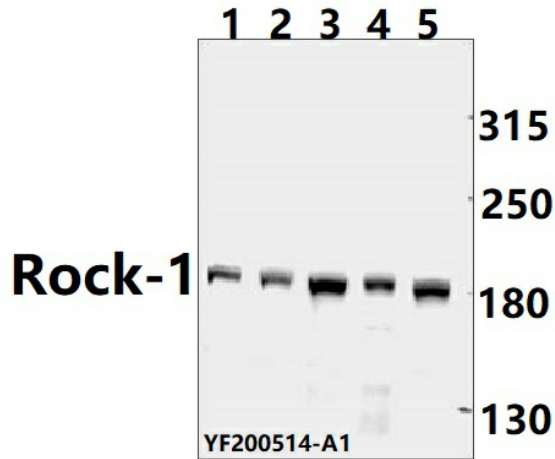


[View online »](#)

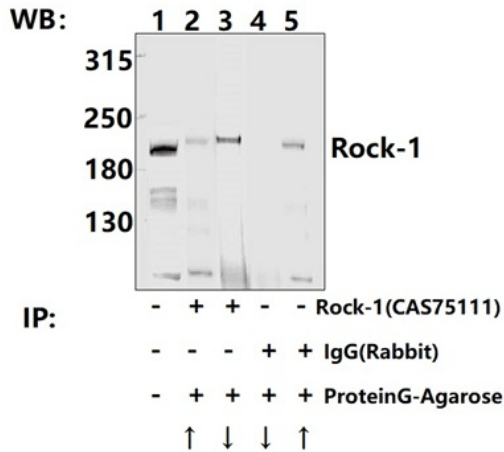
**Synonyms:** p160 ROCK-1; P160rock; Renal carcinoma antigen NY-REN-35; Rho-associated, coiled-coil-containing protein kinase 1; Rho-associated, coiled-coil-containing protein kinase I; Rho-associated protein kinase 1; ROCK-I; ROCK1

**Note:** For research use only, not for use in diagnostic procedure.

**Product images:**



Western blot (WB) analysis of Rock-1 polyclonal antibody at 1:5000 dilution Lane1:PC12 whole cell lysate(40ug) Lane2:CT-26 whole cell lysate(40ug) Lane3:HEK293T whole cell lysate(40ug) Lane4:HCT116 whole cell lysate(40ug) Lane5:HeLa whole cell lysate(40ug)



Immunoprecipitation - Rock-1 Polyclonal Antibody