

## Product datasheet for **TA392627S**

### **RALBP1 Rabbit Polyclonal Antibody**

#### **Product data:**

Product Type:	Primary Antibodies
Applications:	WB
Recommended Dilution:	WB: 1:5000~1:10000 IP:1:2000~1:8000
Reactivity:	Human, Rat, Mouse
Host:	Rabbit
Isotype:	IgG
Clonality:	Polyclonal
Immunogen:	Recombinant protein of human RalBP1.
Specificity:	RalBP1 polyclonal antibody detects endogenous levels of RalBP1 protein.
Formulation:	Rabbit IgG, 1mg/ml in PBS with 0.02% sodium azide, 50% glycerol, pH7.2.
Concentration:	1mg/ml
Conjugation:	Unconjugated
Storage:	Store at 4°C short term. Aliquot and store at -20°C long term. Avoid freeze-thaw cycles.
Stability:	1 year
Predicted Protein Size:	~ 100 kDa
Gene Name:	ralA binding protein 1
Database Link:	<a href="#">Entrez Gene 10928 Human Q15311</a>



[View online »](#)

**Background:**

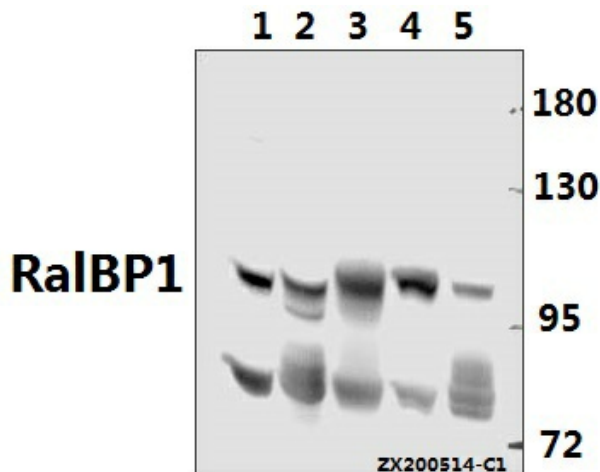
The RalA binding protein 1 (RalBP1 or RLIP76) was originally identified as a GTP-RalA associated protein that acted as a downstream RalA effector in regulating Ral-Ras signaling. RalBP1 interacts with RalA and the endocytosis protein REPS2 (POB1) through its carboxy-terminal Ral binding domain. RalBP1 has an intrinsic GTPase activating function and interacts with Cdc42 through its centrally located Rho-GAP domain. A protein complex containing RalBP1/POB1/RalA regulates endocytosis of membrane receptors. RalBP1 also functions as a non-ABC transporter that catalyzes the ATP-dependent transport of numerous xenobiotics, including glutathione conjugates and some chemotherapeutic agents. RalBP1 transporter activity may play an important role in detoxification, drug resistance and the stress response. Increased expression of RalBP1 protein is associated with some forms of cancer and regression of cancer xenografts results from RalBP1 inhibition. Evidence to date suggests that RalBP1 may be a promising therapeutic target for cancer therapy.

**Synonyms:**

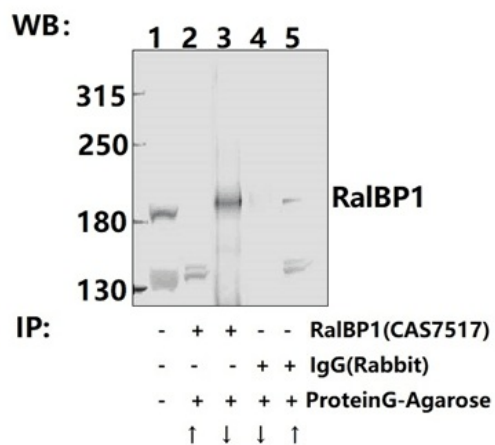
76 kDa Ral-interacting protein; Dinitrophenyl S-glutathione ATPase; DNP-SG ATPase; Ral-interacting protein 1; RalA-binding protein 1; RALBP1; RalBP1; RLIP1; RLIP76

**Note:**

For research use only, not for use in diagnostic procedure.

**Product images:**

Western blot (WB) analysis of RalBP1 polyclonal antibody at 1:5000 dilution Lane1:CT26 whole cell lysate(40ug) Lane2:PC12 whole cell lysate(40ug) Lane3:Jurkat whole cell lysate(40ug) Lane4:HCT116 whole cell lysate(40ug) Lane5:HEK293T whole cell lysate(40ug)



Immunoprecipitation - RalBP1 Polyclonal Antibody