

Product datasheet for **TA392624S**

MPRIP Rabbit Polyclonal Antibody

Product data:

Product Type:	Primary Antibodies
Applications:	WB
Recommended Dilution:	WB: 1:5000~1:10000 IP:1:2000~1:8000 IHC:1:50~1:100
Reactivity:	Human, Mouse, Rat
Host:	Rabbit
Isotype:	IgG
Clonality:	Polyclonal
Immunogen:	Recombinant protein of human M-RIP.
Specificity:	M-RIP polyclonal antibody detects endogenous levels of M-RIP protein.
Formulation:	Rabbit IgG, 1mg/ml in PBS with 0.02% sodium azide, 50% glycerol, pH7.2.
Concentration:	1mg/ml
Conjugation:	Unconjugated
Storage:	Store at 4°C short term. Aliquot and store at -20°C long term. Avoid freeze-thaw cycles.
Stability:	1 year
Predicted Protein Size:	~ 130-160kDa
Gene Name:	myosin phosphatase Rho interacting protein
Database Link:	Entrez Gene 23164 Human Q6WCQ1



[View online »](#)

Background:

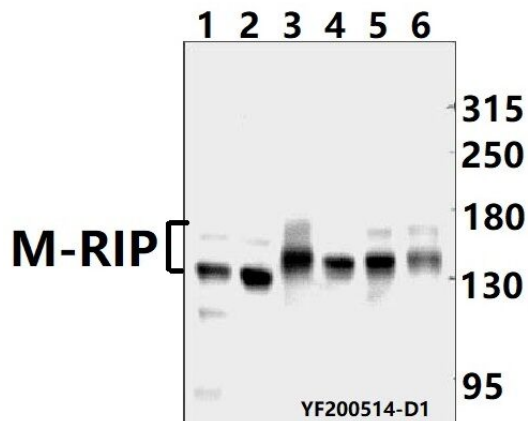
Myosin phosphatase-rho interacting protein (M-RIP), also known as p116RIP, RIP3, and MPRIP, localizes to actin-myosin filaments regulating cytoskeletal dynamics. M-RIP contains amino-terminal pleckstrin homology domains, carboxyl-terminal coiled-coil domains, and was originally identified to associate with the myosin phosphatase complex. M-RIP binds to MBS/MYRT, the myosin binding subunit of myosin phosphatase, as well as RhoA. Phosphorylation of MYRT by Rho-associated kinase (ROCK) inhibits myosin phosphatase activity, resulting in increased levels of phosphorylation on myosin light chain, and enhanced contractility. M-RIP may function as a scaffolding protein for the complex between the myosin phosphatase complex, Rho/ROCK, and actin. Silencing of M-RIP results in disassembly of the complex, increased phosphorylation of myosin light chain, and changes to cytoskeletal dynamics.

Synonyms:

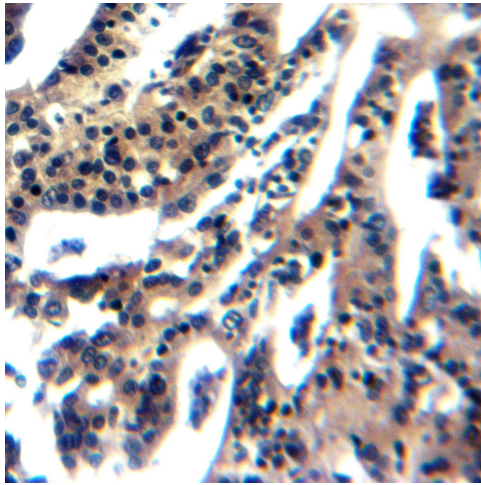
M-RIP; MPRIP; Myosin phosphatase Rho-interacting protein; p116Rip; Rho-interacting protein 3; RIP3

Note:

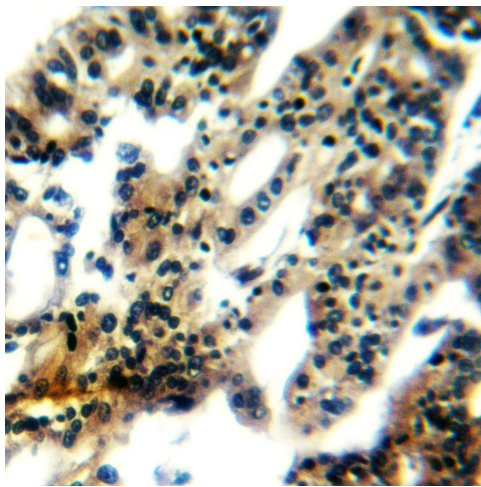
For research use only, not for use in diagnostic procedure.

Product images:


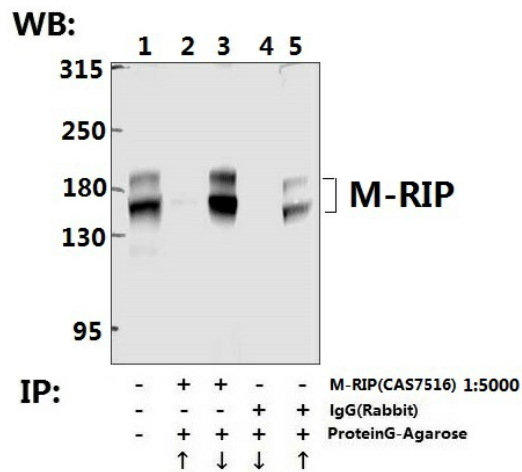
Western blot (WB) analysis of M-RIP polyclonal antibody at 1:5000 dilution Lane1:PC12 whole cell lysate(40ug) Lane2:CT-26 whole cell lysate(40ug) Lane3:H1792 whole cell lysate(40ug) Lane4:Myla2059 whole cell lysate(40ug) Lane5:PC3 whole cell lysate(40ug) Lane6:SGC7901 whole cell lysate(40ug)



Immunohistochemistry of paraffin-embedded human colon carcinoma using M-RIP antibody at dilution of 1:50.



Immunohistochemistry of paraffin-embedded human colon carcinoma using M-RIP antibody at dilution of 1:50.



Immunoprecipitation - M-RIP Polyclonal Antibody