

## Product datasheet for **TA392622**

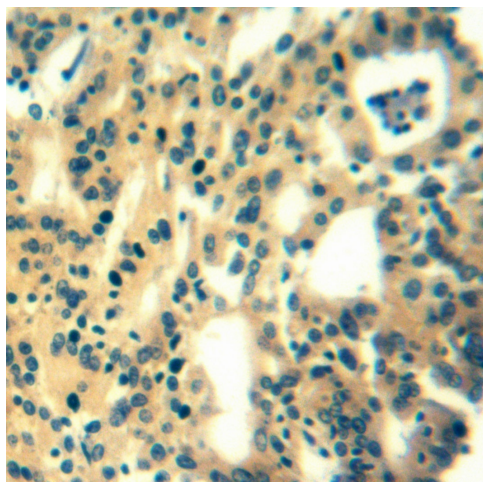
### Cytochrome C (CYCS) Rabbit Polyclonal Antibody

#### Product data:

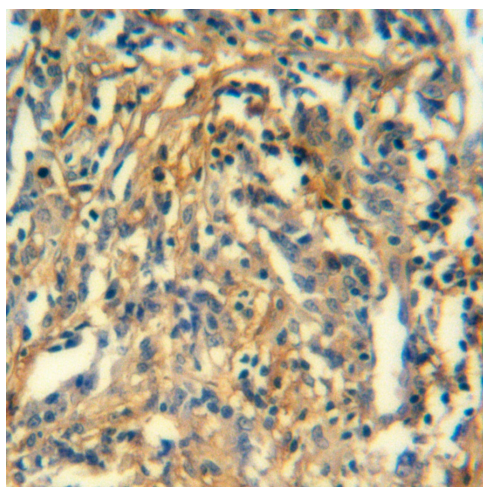
Product Type:	Primary Antibodies
Applications:	WB
Recommended Dilution:	WB: 1:2000~1:5000 IHC:1:50~1:100
Reactivity:	Human, Rat, Mouse
Host:	Rabbit
Isotype:	IgG
Clonality:	Polyclonal
Immunogen:	Recombinant protein of human Cytochrome c.
Specificity:	Cytochrome c polyclonal antibody detects endogenous levels of Cytochrome c protein.
Formulation:	Rabbit IgG, 1mg/ml in PBS with 0.02% sodium azide, 50% glycerol, pH7.4.
Concentration:	1mg/ml
Conjugation:	Unconjugated
Storage:	Store at 4°C short term. Aliquot and store at -20°C long term. Avoid freeze-thaw cycles.
Stability:	1 year
Predicted Protein Size:	~ 17 kDa
Gene Name:	cytochrome c, somatic
Database Link:	<a href="#">Entrez Gene 54205 Human P99999</a>
Background:	Cytochrome c is a well conserved electron-transport protein and is part of the respiratory chain localized to mitochondrial intermembrane space. Upon apoptotic stimulation, cytochrome c released from mitochondria associates with procaspase-9 (47 kDa)/Apaf 1. This complex processes caspase-9 from inactive proenzyme to its active form. This event further triggers caspase-3 activation and eventually leads to apoptosis.
Synonyms:	CYC; CYCS; Cytochrome c
Note:	For research use only, not for use in diagnostic procedure.



[View online »](#)

**Product images:**

Immunohistochemistry of paraffin-embedded human colon carcinoma using Cytochrome c antibody at dilution of 1:50.



Immunohistochemistry of paraffin-embedded human colon carcinoma using Cytochrome c antibody at dilution of 1:50.