

## Product datasheet for **TA392621M**

### Raptor (RPTOR) Rabbit Polyclonal Antibody

#### Product data:

Product Type:	Primary Antibodies
Applications:	WB
Recommended Dilution:	WB: 1:500~1:1000
Reactivity:	Human, Mouse
Host:	Rabbit
Isotype:	IgG
Clonality:	Polyclonal
Immunogen:	Synthetic phosphopeptide derived from human Raptor around the phosphorylation site of Ser792.
Specificity:	A phospho specific peptide corresponding to residues surrounding Ser792 of human RPTOR
Formulation:	Rabbit IgG, 1mg/ml in PBS with 0.02% sodium azide, 50% glycerol, pH7.2
Concentration:	1mg/ml
Conjugation:	Unconjugated
Storage:	Store at 4°C short term. Aliquot and store at -20°C long term. Avoid freeze-thaw cycles.
Stability:	1 year
Predicted Protein Size:	~ 150 kDa
Gene Name:	regulatory associated protein of MTOR complex 1
Database Link:	<a href="#">Entrez Gene 57521 Human Q8N122</a>
Background:	Regulatory associated protein of FRAP, also designated Raptor, is a binding partner for mammalian target of rapamycin kinase (FRAP), and is essential for FRAP signalling in vivo. Raptor binding to FRAP is critical for FRAP-catalysed substrate phosphorylation of 4E-BP1. The raptor-FRAP complex is nutrient-sensitive and is important for a mechanism by which cells coordinate cell growth and size with changing environmental conditions. Raptor serves as a negative regulator of FRAP kinase activity under nutrient-deprived conditions and is an important component in the FRAP pathway. Raptor is highly expressed in skeletal muscle and to a lesser extent in brain, kidney, lung and placenta.

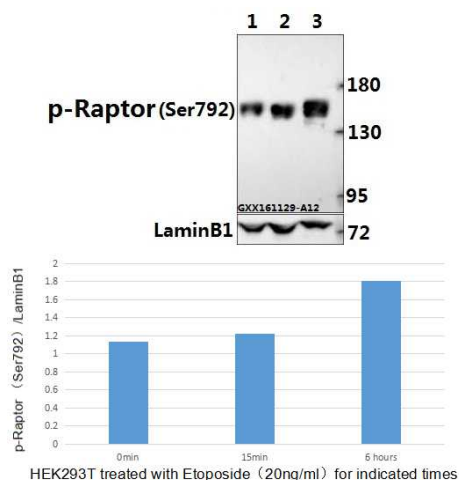


[View online »](#)

**Synonyms:** KIAA1303; p150 target of rapamycin (TOR)-scaffold protein; RAPTOR; Raptor; Regulatory-associated protein of mTOR; RPTOR

**Note:** For research use only, not for use in diagnostic procedure.

### Product images:



Western blot analysis of extracts of 293T cells, using Phospho-Raptor-Ser792 antibody at 1:1000 dilution. 293T cells were treated by Oligomycin (0.5  $\mu$ M) at 37°C for 30 minutes after serum-starvation overnight. Lysates/proteins: 25ug per lane.