

Product datasheet for TA392620

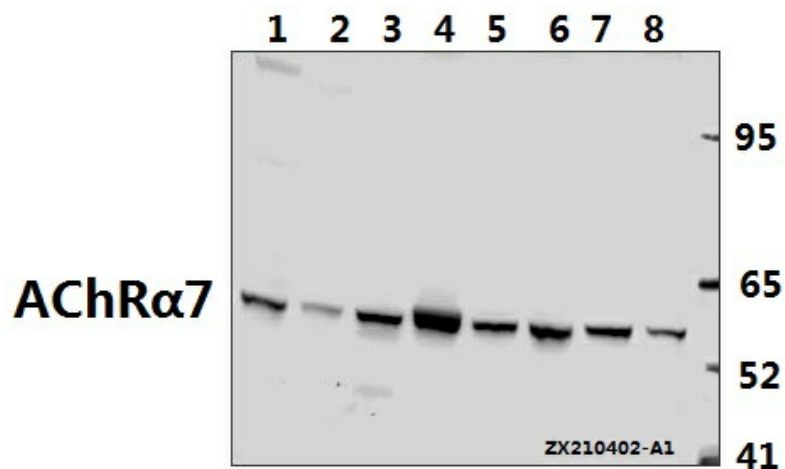
Rabbit Polyclonal Antibody

Product data:

Product Type:	Primary Antibodies
Applications:	WB
Recommended Dilution:	WB: 1:5000~1:1000 0
Reactivity:	Human, Mouse, Rat
Host:	Rabbit
Isotype:	IgG
Clonality:	Polyclonal
Immunogen:	recombinant protein
Specificity:	AChRα7 polyclonal antibody detects endogenous levels of AChRα7 protein.
Formulation:	Rabbit IgG, 1mg/ml in PBS with 0.02% sodium azide, 50% glycerol, pH7.2
Concentration:	1mg/ml
Conjugation:	Unconjugated
Storage:	Store at 4°C short term. Aliquot and store at -20°C long term. Avoid freeze-thaw cycles.
Stability:	1 year
Predicted Protein Size:	~ 56 kDa
Database Link:	P36544/Q494W8
Background:	Chromosome 15 encodes over 700 genes and comprises nearly 3% of the human genome. CHRFAM7A, a fusion protein comprised of FAM7A and AChRα7, is encoded by the CHRFAM7A gene, which is located on a region of human chromosome 15 that is associated with several neuropsychiatric disorders, such as schizophrenia and bipolar affective disorder. CHRFAM7A, also known as D-10 or CHRNA7, is a 412 amino acid multi-pass membrane protein that belongs to the nicotinic acetylcholine receptor (nAChR) subfamily of ligand-gated ion channel proteins, a protein superfamily that mediates signal transmission at synapses. CHRFAM7A is expressed in the hippocampus. Alternative splicing of the CHRFAM7A gene produces two splice variants.
Synonyms:	CHRFAM7A; CHRNA7; CHRNA7-DR1; CHRNA7-FAM7A fusion protein; D-10; NACHRA7; Neuronal acetylcholine receptor subunit alpha-7
Note:	For research use only, not for use in diagnostic procedure.


[View online »](#)

Product images:



Western blot (WB) analysis of AChRα7 pAb at 1:5000 dilution Lane1:PC12 whole cell lysate(40ug) Lane2:AML-12 whole cell lysate(40ug) Lane3:HCT116 whole cell lysate(40ug) Lane4:EC9706 whole cell lysate(40ug) Lane5:SGC7901 whole cell lysate(40ug) Lane6:A549 whole cell lysate(40ug) Lane7:HEK293T whole cell lysate(40ug)