

Product datasheet for **TA392619S**

STAT2 Rabbit Polyclonal Antibody

Product data:

Product Type:	Primary Antibodies
Applications:	WB
Recommended Dilution:	WB:1:1000~1:2000 IP:1:50~1:200
Reactivity:	Human
Host:	Rabbit
Isotype:	IgG
Clonality:	Polyclonal
Immunogen:	Synthetic peptide, corresponding to Human STAT2.
Specificity:	STAT2 polyclonal antibody detects endogenous levels of STAT2 protein.
Formulation:	Rabbit IgG, 1mg/ml in PBS with 0.02% sodium azide, 50% glycerol, pH7.2
Concentration:	1mg/ml
Conjugation:	Unconjugated
Storage:	Store at 4°C short term. Aliquot and store at -20°C long term. Avoid freeze-thaw cycles.
Stability:	1 year
Predicted Protein Size:	~ 113 kDa
Gene Name:	signal transducer and activator of transcription 2
Database Link:	Entrez Gene 6773 Human P52630
Background:	Membrane receptor signaling by various ligands, including interferons and growth hormones such as EGF, induces activation of Jak kinases which then leads to tyrosine phosphorylation of the various Stat transcription factors. Stat1 and Stat2 are induced by IFN- α and form a heterodimer which is part of the ISGF3 transcription factor complex. Although early reports indicate Stat3 activation by EGF and IL-6, it has been shown that Stat3 β appears to be activated by both while Stat3 α is activated by EGF, but not by IL-6. Highest expression of Stat4 is seen in testis and myeloid cells. IL-12 has been identified as an activator of Stat4. Stat5 has been shown to be activated by prolactin and by IL-3. Stat6 is involved in IL-4 activated signaling pathways.

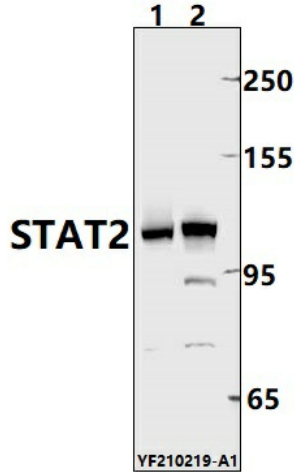


[View online »](#)

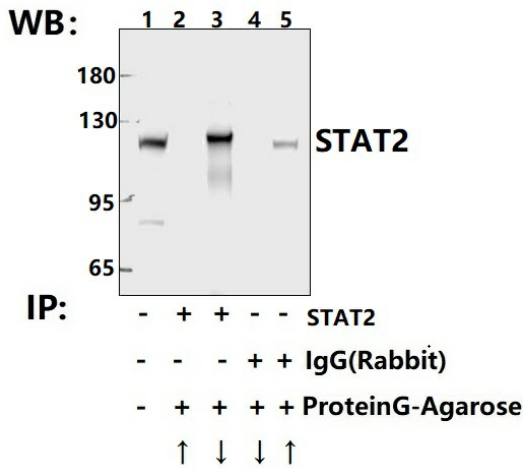
Synonyms: STAT2, Homo sapiens interferon alpha induced transcriptional activator, interferon alpha induced transcriptional activator, ISGF 3, ISGF3, MGC59816, P113, signal transducer and activator of transcription 2 113kD, Signal transducer and activator of transcription 2, STAT113, Stat2, STAT2,

Note: For research use only, not for use in diagnostic procedure.

Product images:



Western blot (WB) analysis of Stat5a/b pAb at 1:1000 dilution Lane1:HepG2 whole cell lysate(20ug) Lane2:U-87MG whole cell lysate(20ug)



Immunoprecipitation of SGC7901 cell lysates using STAT2 pAb (Sepharose Bead Conjugate)#BD0048 (lane 2 and lane 3) and Nonspecific IgG Control (Sepharose Bead Conjugate)#BD0048 (lane 4 and lane 5) .Lane 1 is 30% input. The western blot was probed using STAT2 pAb #[TA392619].