

## Product datasheet for **TA392617M**

### CISH Rabbit Polyclonal Antibody

#### Product data:

Product Type:	Primary Antibodies
Applications:	WB
Recommended Dilution:	WB: 1:500~1:1000 IHC: 1:50~1:200
Reactivity:	Rat, Mouse
Host:	Rabbit
Isotype:	IgG
Clonality:	Polyclonal
Immunogen:	Synthetic peptide, corresponding to Human CISH.
Specificity:	CISH polyclonal antibody detects endogenous levels of CISH protein.
Formulation:	Rabbit IgG, 1mg/ml in PBS with 0.02% sodium azide, 50% glycerol, pH7.2
Concentration:	1mg/ml
Conjugation:	Unconjugated
Storage:	Store at 4°C short term. Aliquot and store at -20°C long term. Avoid freeze-thaw cycles.
Stability:	1 year
Predicted Protein Size:	~ 32 kDa
Gene Name:	cytokine inducible SH2 containing protein
Database Link:	<a href="#">Q9NSE2</a>



[View online »](#)

**Background:**

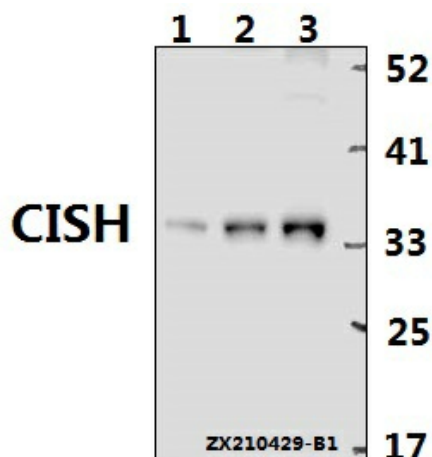
The suppressor of cytokine signaling (SOCS) family members are negative regulators of cytokine signal transduction that inhibit the Jak/Stat pathway. The SOCS family consists of at least 8 members including the originally identified cytokine-inducible SH2-containing protein (CIS1), as well as SOCS1-7. Each SOCS family member contains a central SH2 domain and a conserved carboxy-terminal motif designated as the SOCS box. These proteins are important regulators of cytokine signaling, proliferation, differentiation, and immune responses. CISH/CIS1, the first described member of the SOCS family, is induced by a number of cytokines including IL-2, IL-3, GM-CSF, and EPO. The CISH protein appears as a doublet around 32 and 37 kDa, the nature of which is unknown. CISH binds to phosphorylated cytokine receptors and can inhibit Stat5 activity. Expression of CISH is regulated by Stat5, thereby providing feedback modulation. Transgenic mice overexpressing CISH display phenotypes similar to Stat5 knockouts, including defects in mammary gland development and in T and NK cell regulation. Research studies have shown that polymorphisms within the CISH gene are associated with susceptibility to infectious diseases.

**Synonyms:**

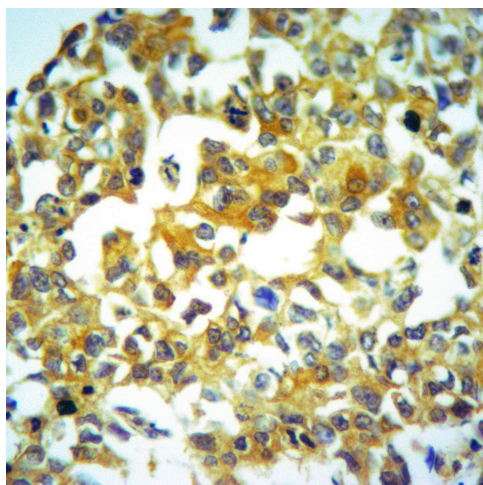
CIS; CIS-1; CISH; Cytokine-inducible SH2-containing protein; G18; Protein G18; SOCS; Suppressor of cytokine signaling

**Note:**

For research use only, not for use in diagnostic procedure.

**Product images:**


Western blot (WB) analysis of CISH polyclonal antibody at 1:500 dilution Lane1:The Liver tissue lysate of Mouse(40ug) Lane2:The Kidney tissue lysate of Rat(40ug) Lane3:The Liver tissue lysate of Rat(40ug)



Immunohistochemistry of paraffin-embedded Human Liver cancer using CISH antibody at dilution of 1:50.