

## Product datasheet for **TA392615**

### LC3B (MAP1LC3B) Rabbit Polyclonal Antibody

#### Product data:

Product Type:	Primary Antibodies
Applications:	WB
Recommended Dilution:	WB: 1:500~1:1000 IHC: 1:50~1:200
Reactivity:	Human, Mouse, Rat
Host:	Rabbit
Isotype:	IgG
Clonality:	Polyclonal
Immunogen:	A synthetic peptide corresponding to residues in Human MAP1LC3B.
Specificity:	MAP1LC3B (D23) polyclonal antibody detects endogenous levels of LC3-I and LC3-II protein.
Formulation:	Rabbit IgG, 1mg/ml in PBS with 0.02% sodium azide, 50% glycerol, pH7.2
Concentration:	1mg/ml
Conjugation:	Unconjugated
Storage:	Store at 4°C short term. Aliquot and store at -20°C long term. Avoid freeze-thaw cycles.
Stability:	1 year
Predicted Protein Size:	~ 16-18 kDa
Gene Name:	microtubule associated protein 1 light chain 3 beta
Database Link:	<a href="#">Entrez Gene 81631 Human Q9GZQ8</a>
Background:	MAP1LC3B, a homolog of Apg8p, is essential for autophagy and associated to the autophagosome membranes after processing. Two forms of LC3 $\beta$ , the cytosolic LC3-I and the membrane-bound LC3-II, are produced post-translationally. LC3-I is formed by the removal of the C-terminal 22 amino acids from newly synthesized LC3 $\beta$ , followed by the conversion of a fraction of LC3-I into LC3-II. LC3 enhances fibronectin mRNA translation in ductus arteriosus cells through association with 60S ribosomes and binding to an AU-rich element in the 3' untranslated region of fibronectin mRNA. This facilitates sorting of fibronectin mRNA onto rough endoplasmic reticulum and translation. MAP LC3 $\beta$ may also be involved in formation of autophagosomal vacuoles. It is expressed primarily in heart, testis, brain and skeletal muscle.



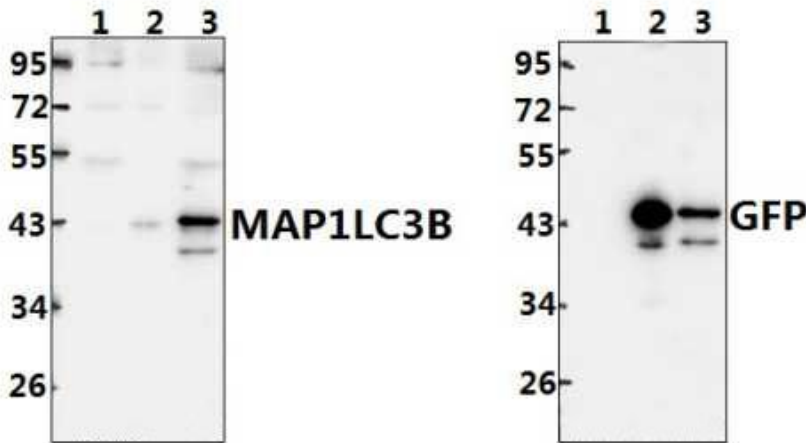
[View online >](#)

**Synonyms:**

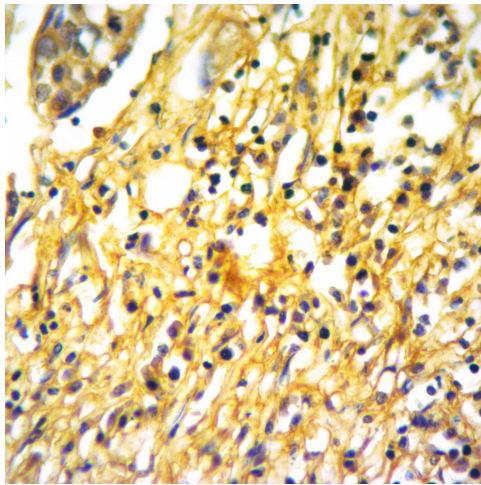
Autophagy-related protein LC3 B; Autophagy-related ubiquitin-like modifier LC3 B; LC3-I; LC3-II; LC3I; LC3II; MAP1 light chain 3-like protein 2; MAP1A/MAP1B LC3 B; MAP1A/MAP1B light chain 3 B; MAP1ALC3; MAP1LC3B; Microtubule-associated protein 1 light chain 3 beta; Microtubule-associated proteins 1A/1B light chain 3B

**Note:**

For research use only, not for use in diagnostic procedure.

**Product images:**


Western blot (WB) analysis of MAP1LC3B (D23) polyclonal antibody at 1:500 dilution  
 Lane1:HEK293T whole cell lysate(20ug)  
 Lane2:HEK293T transfected with pEGFP-C3-LC3A whole cell lysate(20ug) Lane3:HEK293T transfected with pEGFP-C3-LC3B whole cell lysate(20ug)



Immunohistochemistry of paraffin-embedded Human Breast cancer using MAP1LC3B antibody at dilution of 1:50.