

## Product datasheet for **TA392614S**

### Apg12 (ATG12) Rabbit Polyclonal Antibody

#### Product data:

Product Type:	Primary Antibodies
Applications:	WB
Recommended Dilution:	WB: 1:500~1:1000 IHC: 1:50~1:200
Reactivity:	Human, Mouse, Rat
Host:	Rabbit
Isotype:	IgG
Clonality:	Polyclonal
Immunogen:	Synthetic peptide, corresponding to Human ATG12.
Specificity:	ATG12 (A98) polyclonal antibody detects endogenous levels of ATG12 protein.
Formulation:	Rabbit IgG, 1mg/ml in PBS with 0.02% sodium azide, 50% glycerol, pH7.2
Concentration:	1mg/ml
Conjugation:	Unconjugated
Storage:	Store at 4°C short term. Aliquot and store at -20°C long term. Avoid freeze-thaw cycles.
Stability:	1 year
Predicted Protein Size:	~ 20, 55 kDa
Gene Name:	autophagy related 12
Database Link:	<a href="#">Entrez Gene 9140 Human O94817</a>
Background:	Autophagy is a catabolic process for the autophagosomic-lysosomal degradation of bulk cytoplasmic contents. Autophagy is generally activated by conditions of nutrient deprivation but has also been associated with a number of physiological processes including development, differentiation, neurodegeneration, infection, and cancer. The molecular machinery of autophagy was largely discovered in yeast and referred to as autophagy-related (Atg) genes. Formation of the autophagosome involves a ubiquitin-like conjugation system in which Atg12 is covalently bound to Atg5 and targeted to autophagosome vesicles. This conjugation reaction is mediated by the ubiquitin E1-like enzyme Atg7 and the E2-like enzyme Atg10.

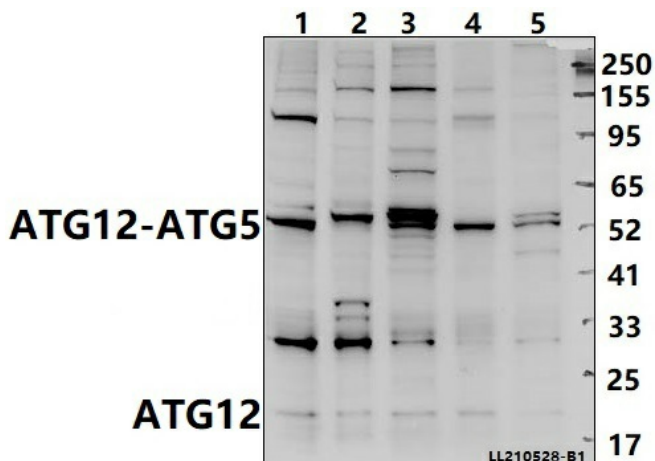


[View online »](#)

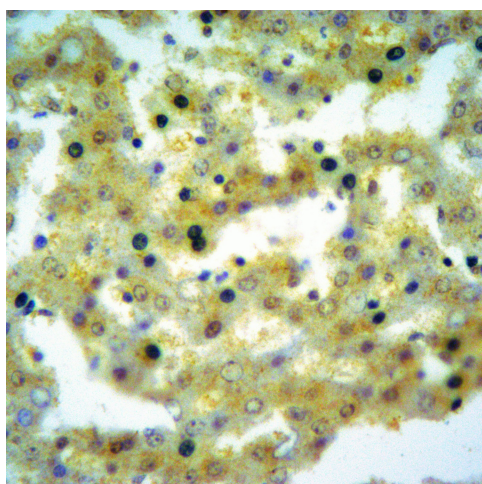
**Synonyms:** APG12; APG12-like; APG12L; ATG12; Autophagy-related protein 12; Ubiquitin-like protein ATG12

**Note:** For research use only, not for use in diagnostic procedure.

**Product images:**



Western blot (WB) analysis of ATG12 (A98) polyclonal antibody at 1:500 dilution Lane1:SP2/0 whole cell lysate(40ug) Lane2:C6 whole cell lysate(40ug) Lane3:PC3 whole cell lysate(40ug) Lane4:SHSY5Y whole cell lysate(40ug) Lane5:HCT116 whole cell lysate(40ug)



Immunohistochemistry of paraffin-embedded Human Liver cancer using ATG12 antibody at dilution of 1:50.