

## Product datasheet for **TA392613S**

### Apg12 (ATG12) Rabbit Polyclonal Antibody

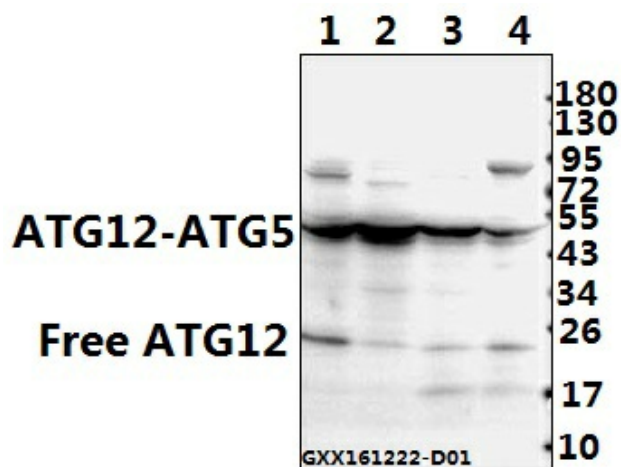
#### Product data:

Product Type:	Primary Antibodies
Applications:	WB
Recommended Dilution:	WB: 1:500~1:1000 IHC: 1:50~1:200
Reactivity:	Human, Mouse, Rat
Host:	Rabbit
Isotype:	IgG
Clonality:	Polyclonal
Immunogen:	A synthetic peptide corresponding to residues in Human ATG12.
Specificity:	ATG12 (S129) polyclonal antibody detects endogenous levels of ATG12 protein.
Formulation:	Rabbit IgG, 1mg/ml in PBS with 0.02% sodium azide, 50% glycerol, pH7.2
Concentration:	1mg/ml
Conjugation:	Unconjugated
Storage:	Store at 4°C short term. Aliquot and store at -20°C long term. Avoid freeze-thaw cycles.
Stability:	1 year
Predicted Protein Size:	~ 18, 55 kDa
Gene Name:	autophagy related 12
Database Link:	<a href="#">Entrez Gene 9140 Human O94817</a>
Background:	Atg12 (autophagy-related protein 12), also known as APG12, APG12L, FBR93 or HAPG12, is a 140 amino acid protein that is ubiquitously expressed and belongs to the Atg12 family of proteins. Atg12 is a homolog of the yeast protein Apg12 that participates in autophagy. Autophagy is a membrane trafficking mechanism that delivers cytoplasmic cargo to the vacuole/lysosome for degradation and recycling.
Synonyms:	APG12; APG12-like; APG12L; ATG12; Autophagy-related protein 12; Ubiquitin-like protein ATG12
Note:	For research use only, not for use in diagnostic procedure.

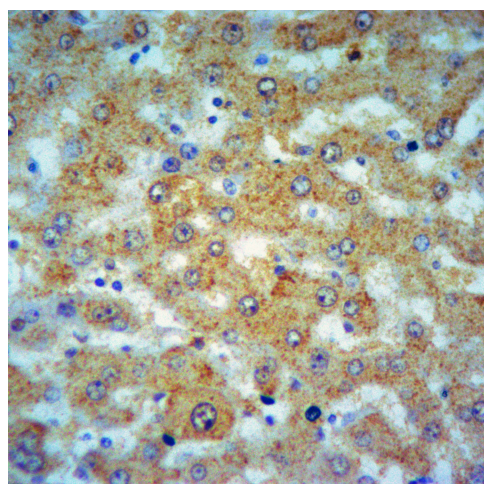


[View online »](#)

Product images:



Western blot (WB) analysis of ATG12 (S129) polyclonal antibody at 1:500 dilution Lane1:C6 whole cell lysate(40ug) Lane2:CT26 whole cell lysate(40ug) Lane3:HepG2 whole cell lysate(40ug) Lane4:HCT116 whole cell lysate(40ug)



Immunohistochemistry of paraffin-embedded Human Liver cancer using ATG12 antibody at dilution of 1:50.