

Product datasheet for **TA392613M**

Apg12 (ATG12) Rabbit Polyclonal Antibody

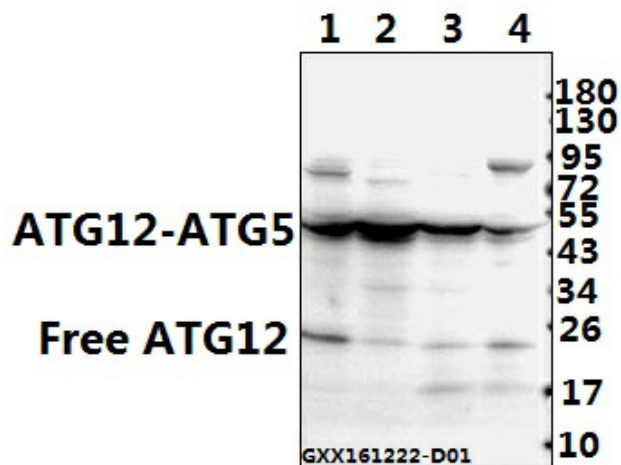
Product data:

Product Type:	Primary Antibodies
Applications:	WB
Recommended Dilution:	WB: 1:500~1:1000 IHC: 1:50~1:200
Reactivity:	Human, Mouse, Rat
Host:	Rabbit
Isotype:	IgG
Clonality:	Polyclonal
Immunogen:	A synthetic peptide corresponding to residues in Human ATG12.
Specificity:	ATG12 (S129) polyclonal antibody detects endogenous levels of ATG12 protein.
Formulation:	Rabbit IgG, 1mg/ml in PBS with 0.02% sodium azide, 50% glycerol, pH7.2
Concentration:	1mg/ml
Conjugation:	Unconjugated
Storage:	Store at 4°C short term. Aliquot and store at -20°C long term. Avoid freeze-thaw cycles.
Stability:	1 year
Predicted Protein Size:	~ 18, 55 kDa
Gene Name:	autophagy related 12
Database Link:	Entrez Gene 9140 Human O94817
Background:	Atg12 (autophagy-related protein 12), also known as APG12, APG12L, FBR93 or HAPG12, is a 140 amino acid protein that is ubiquitously expressed and belongs to the Atg12 family of proteins. Atg12 is a homolog of the yeast protein Apg12 that participates in autophagy. Autophagy is a membrane trafficking mechanism that delivers cytoplasmic cargo to the vacuole/lysosome for degradation and recycling.
Synonyms:	APG12; APG12-like; APG12L; ATG12; Autophagy-related protein 12; Ubiquitin-like protein ATG12
Note:	For research use only, not for use in diagnostic procedure.

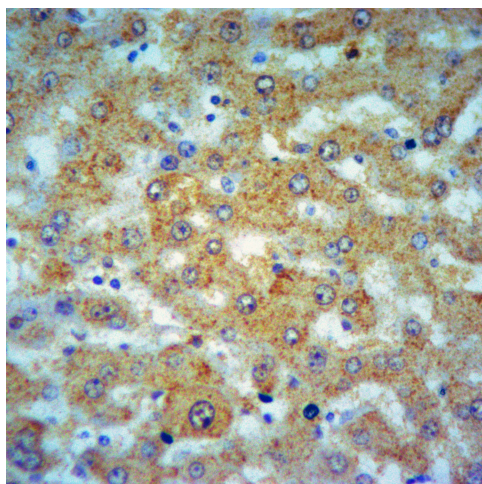


[View online »](#)

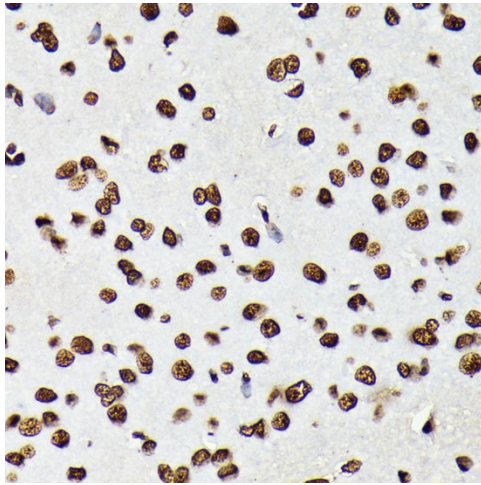
Product images:



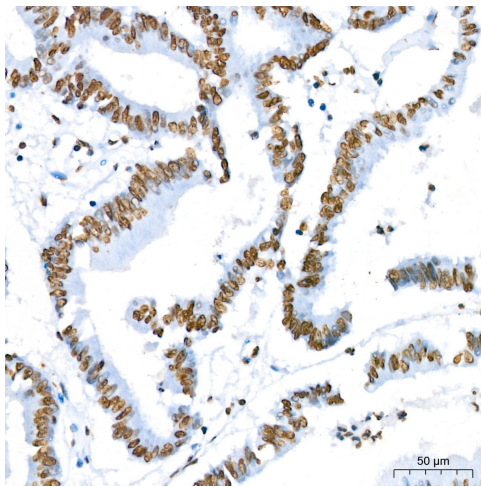
Western blot analysis of lysates from TF-1 cells, using Phospho-STAT5A-Y694 Rabbit mAb ([TA392613]) at 1:1000 dilution. TF-1 cells were treated by GM-CSF (25 ng/mL) at 37°C for 30 minutes after serum-starvation overnight. Secondary antibody: HRP-conjugated Goat anti-Rabbit IgG (H+L) (AS014) at 1:10000 dilution. Lysates/proteins: 25µg per lane. Blocking buffer: 3% nonfat dry milk in TBST. Detection: ECL Basic Kit (RM00020). Exposure time: 60s.



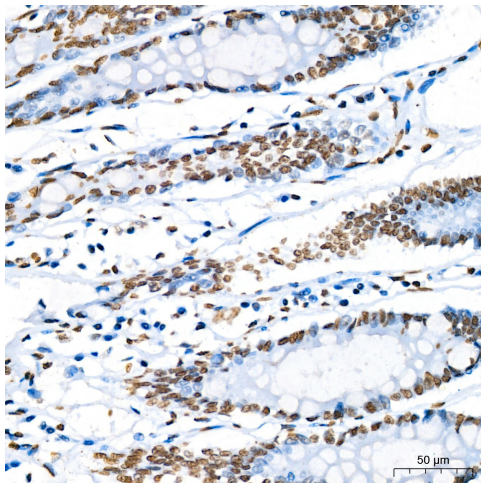
Immunohistochemistry of paraffin-embedded Human Liver cancer using ATG12 antibody at dilution of 1:50.



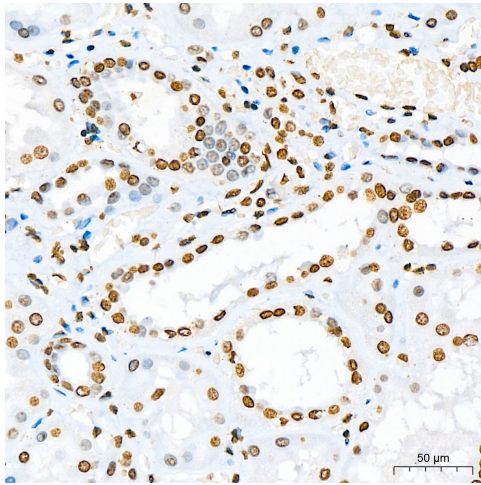
Immunohistochemistry analysis of paraffin-embedded Rat brain using Phospho-STAT5A-Y694 Rabbit mAb ([TA392613]) at dilution of 1:100 (40x lens). Microwave antigen retrieval performed with 0.01M Tris/EDTA Buffer (pH 9.0) prior to IHC staining.



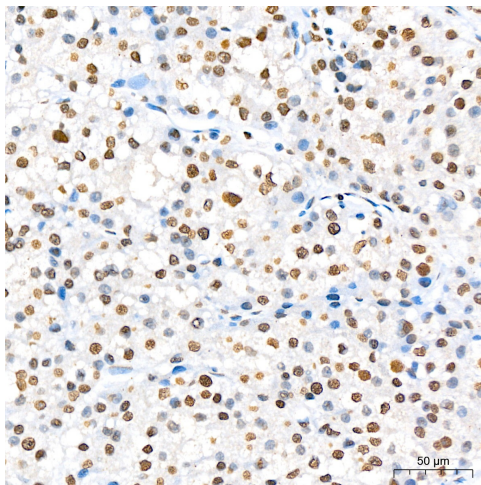
Immunohistochemistry analysis of paraffin-embedded Human colon carcinoma using Phospho-STAT5A-Y694 Rabbit mAb ([TA392613]) at dilution of 1:200 (40x lens). High pressure antigen retrieval performed with 0.01M Citrate Bufferr (pH 6.0) prior to IHC staining.



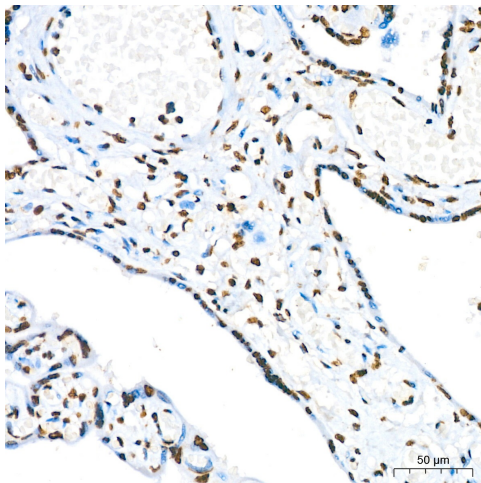
Immunohistochemistry analysis of paraffin-embedded Human colon using Phospho-STAT5A-Y694 Rabbit mAb ([TA392613]) at dilution of 1:200 (40x lens). High pressure antigen retrieval performed with 0.01M Citrate Bufferr (pH 6.0) prior to IHC staining.



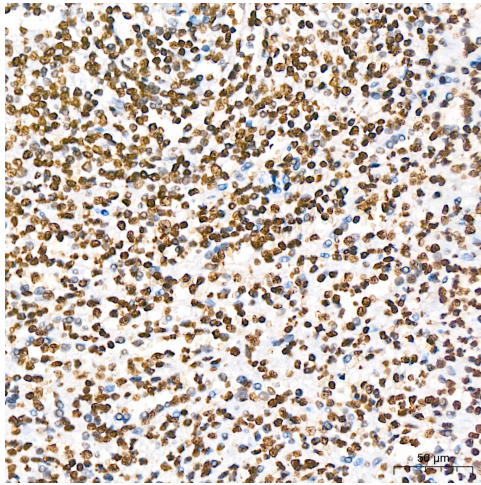
Immunohistochemistry analysis of paraffin-embedded Human kidney using Phospho-STAT5A-Y694 Rabbit mAb ([TA392613]) at dilution of 1:200 (40x lens). High pressure antigen retrieval performed with 0.01M Citrate Bufferr (pH 6.0) prior to IHC staining.



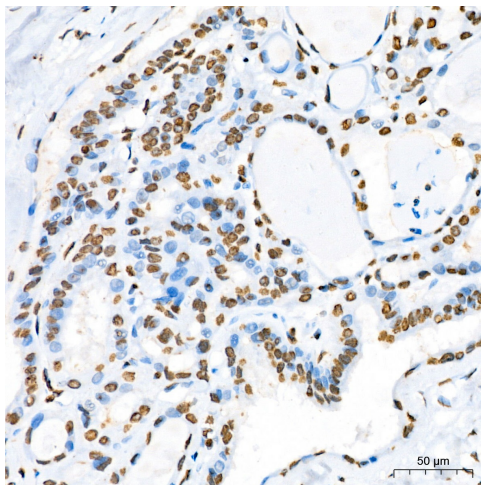
Immunohistochemistry analysis of paraffin-embedded Human liver using Phospho-STAT5A-Y694 Rabbit mAb ([TA392613]) at dilution of 1:200 (40x lens). High pressure antigen retrieval performed with 0.01M Citrate Bufferr (pH 6.0) prior to IHC staining.



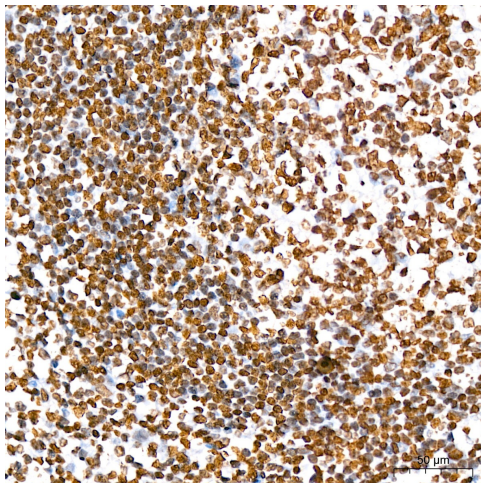
Immunohistochemistry analysis of paraffin-embedded Human placenta using Phospho-STAT5A-Y694 Rabbit mAb ([TA392613]) at dilution of 1:200 (40x lens). High pressure antigen retrieval performed with 0.01M Citrate Bufferr (pH 6.0) prior to IHC staining.



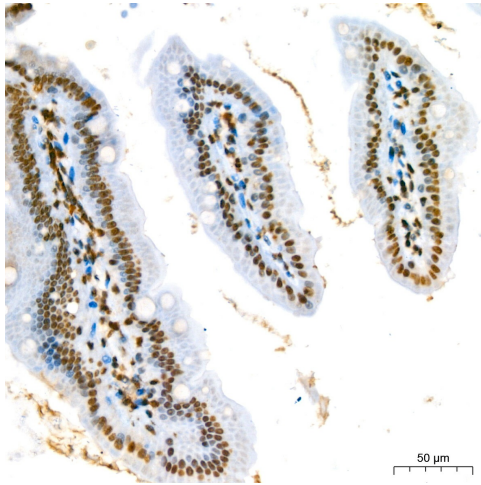
Immunohistochemistry analysis of paraffin-embedded Human spleen using Phospho-STAT5A-Y694 Rabbit mAb ([TA392613]) at dilution of 1:200 (40x lens). High pressure antigen retrieval performed with 0.01M Citrate Bufferr (pH 6.0) prior to IHC staining.



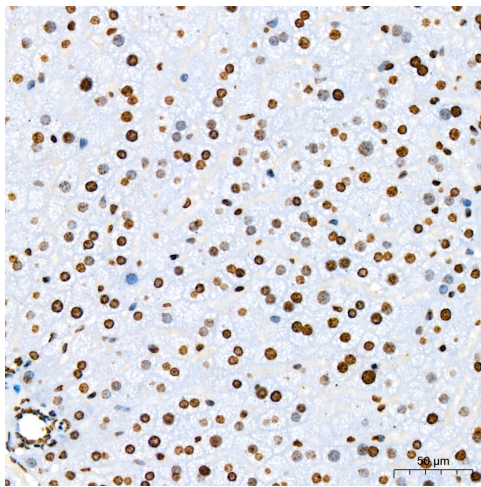
Immunohistochemistry analysis of paraffin-embedded Human thyroid cancer using Phospho-STAT5A-Y694 Rabbit mAb ([TA392613]) at dilution of 1:200 (40x lens). High pressure antigen retrieval performed with 0.01M Citrate Bufferr (pH 6.0) prior to IHC staining.



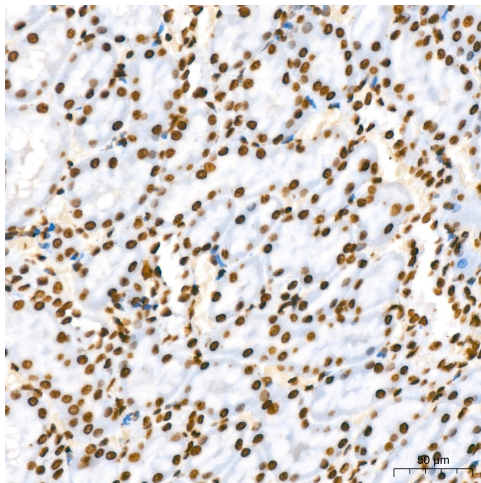
Immunohistochemistry analysis of paraffin-embedded Human tonsil using Phospho-STAT5A-Y694 Rabbit mAb ([TA392613]) at dilution of 1:200 (40x lens). High pressure antigen retrieval performed with 0.01M Citrate Bufferr (pH 6.0) prior to IHC staining.



Immunohistochemistry analysis of paraffin-embedded Mouse intestine using Phospho-STAT5A-Y694 Rabbit mAb ([TA392613]) at dilution of 1:200 (40x lens). High pressure antigen retrieval performed with 0.01M Citrate Bufferr (pH 6.0) prior to IHC staining.



Immunohistochemistry analysis of paraffin-embedded Mouse liver using Phospho-STAT5A-Y694 Rabbit mAb ([TA392613]) at dilution of 1:200 (40x lens). High pressure antigen retrieval performed with 0.01M Citrate Bufferr (pH 6.0) prior to IHC staining.



Immunohistochemistry analysis of paraffin-embedded Rat kidney using Phospho-STAT5A-Y694 Rabbit mAb ([TA392613]) at dilution of 1:200 (40x lens). High pressure antigen retrieval performed with 0.01M Citrate Bufferr (pH 6.0) prior to IHC staining.