

Product datasheet for **TA392612**

PI 3 Kinase p85 alpha (PIK3R1) Rabbit Polyclonal Antibody

Product data:

Product Type:	Primary Antibodies
Applications:	WB
Recommended Dilution:	WB: 1:1000~1:2000
Reactivity:	Human, Rat, Mouse
Host:	Rabbit
Isotype:	IgG
Clonality:	Polyclonal
Immunogen:	Synthetic peptide, corresponding to Human PI 3-kinase p85 α .
Specificity:	PI 3-kinase p85 α (Q498) polyclonal antibody detects endogenous levels of PI 3-kinase p85 α protein.
Formulation:	Rabbit IgG, 1mg/ml in PBS with 0.02% sodium azide, 50% glycerol, pH7.2
Concentration:	1mg/ml
Conjugation:	Unconjugated
Storage:	Store at 4°C short term. Aliquot and store at -20°C long term. Avoid freeze-thaw cycles.
Stability:	1 year
Predicted Protein Size:	~ 85 kDa
Gene Name:	phosphoinositide-3-kinase regulatory subunit 1
Database Link:	Entrez Gene 5295 Human P27986

[View online »](#)

Background:

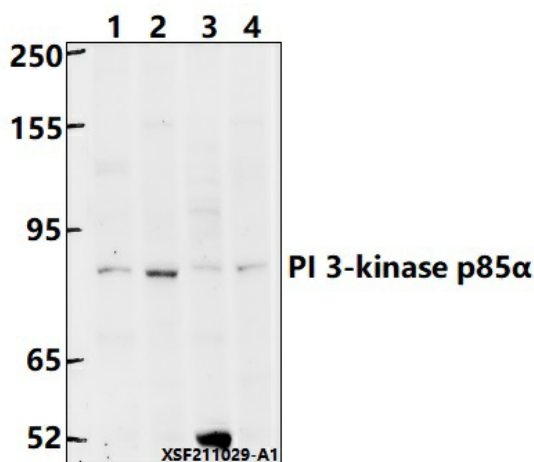
Phosphoinositide 3-kinase (PI3K) catalyzes the production of phosphatidylinositol-3,4,5-triphosphate by phosphorylating phosphatidylinositol (PI), phosphatidylinositol-4-phosphate (PIP), and phosphatidylinositol-4,5-bisphosphate (PIP₂). Growth factors and hormones trigger this phosphorylation event, which in turn coordinates cell growth, cell cycle entry, cell migration, and cell survival. PTEN reverses this process, and research studies have shown that the PI3K signaling pathway is constitutively activated in human cancers that have loss of function of PTEN. PI3Ks are composed of a catalytic subunit (p110) and a regulatory subunit. Various isoforms of the catalytic subunit (p110 α , p110 β , p110 γ , and p110 δ) have been isolated, and the regulatory subunits that associate with p110 α , p110 β , and p110 δ are p85 α and p85 β . In contrast, p110 γ associates with a p101 regulatory subunit that is unrelated to p85. Furthermore, p110 γ is activated by $\beta\gamma$ subunits of heterotrimeric G proteins.

Synonyms:

GRB1; Phosphatidylinositol 3-kinase 85 kDa regulatory subunit alpha; Phosphatidylinositol 3-kinase regulatory subunit alpha; PI3-kinase regulatory subunit alpha; PI3-kinase subunit p85-alpha; PI3K regulatory subunit alpha; PIK3R1; PtdIns-3-kinase regulatory subunit alpha; PtdIns-3-kinase regulatory subunit p85-alpha

Note:

For research use only, not for use in diagnostic procedure.

Product images:


Western blot (WB) analysis of PI 3-kinase p85 α (Q498) polyclonal antibody at 1:1000 dilution. Lane 1: C6 whole cell lysate (40ug); Lane 2: HeLa whole cell lysate (40ug); Lane 3: HEK293T whole cell lysate (40ug); Lane 4: AML-12 whole cell lysate (40ug).