

## Product datasheet for **TA392610**

### CXADR Rabbit Polyclonal Antibody

#### Product data:

Product Type:	Primary Antibodies
Applications:	WB
Recommended Dilution:	WB: 1:1000~1:2000
Reactivity:	Human, Pig
Host:	Rabbit
Isotype:	IgG
Clonality:	Polyclonal
Immunogen:	Synthetic peptide, corresponding to Human CAR.
Specificity:	CAR polyclonal antibody detects endogenous levels of CAR protein.
Formulation:	Rabbit IgG, 1mg/ml in PBS with 0.02% sodium azide, 50% glycerol, pH7.2
Concentration:	1mg/ml
Conjugation:	Unconjugated
Storage:	Store at 4°C short term. Aliquot and store at -20°C long term. Avoid freeze-thaw cycles.
Stability:	1 year
Predicted Protein Size:	~ 50 kDa
Gene Name:	coxsackie virus and adenovirus receptor
Database Link:	<a href="#">Entrez Gene 1525 Human P78310</a>



[View online »](#)

**Background:**

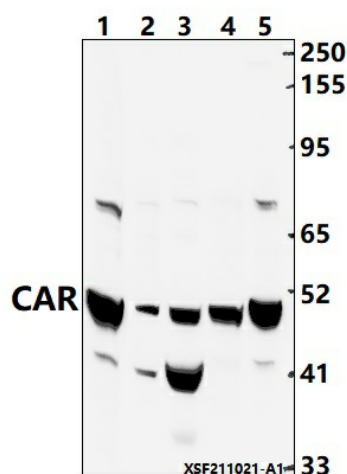
The coxsackie virus and adenovirus receptor (CXADR, CAR) is a highly conserved, single-transmembrane glycoprotein and the primary receptor to mediate cellular attachment and infection of coxsackie B viruses and most adenoviruses. The CAR protein contains a pair of Ig-like domains within the amino-terminal extracellular domain and a carboxyl-terminal PDZ motif. Research studies indicate that CAR is a tight junction protein that associates with the ZO-1 scaffold protein and promotes both cell adhesion and restriction of solute and ion movement between cells. Endogenous CAR is targeted to the basolateral plasma membrane by a tyrosine-based basolateral sorting signal and clathrin adaptors AP-1A and AP-1B. CAR binds junctional adhesion molecule L (JAML) on epithelial cells and neutrophils where it activates PI3K and downstream MAPK kinases to stimulate epithelial  $\gamma\delta$  T cell proliferation and increase production of TNF $\alpha$  and keratinocyte growth factor. As a result, the CAR protein plays a potentially critical role in adenoviral gene therapy, immunity, wound repair, inflammation, and cancer therapy. Additional studies demonstrate that CAR is essential in regulating squamous carcinoma cell growth.

**Synonyms:**

CAR; Coxsackievirus and adenovirus receptor; Coxsackievirus B-adenovirus receptor; CVB3-binding protein; CXADR; hCAR; HCVADR

**Note:**

For research use only, not for use in diagnostic procedure.

**Product images:**

Western blot (WB) analysis of CAR polyclonal antibody at 1:1000 dilution Lane1:EC9706 whole cell lysate(40ug) Lane2:The Lung tissue lysate of Pig(40ug) Lane3:The Heart tissue lysate of Pig(40ug) Lane4:LOVO whole cell lysate(40ug) Lane5:HepG2 whole cell lysate(20ug)