

Product datasheet for **TA392606M**

NR1D1 Rabbit Polyclonal Antibody

Product data:

Product Type:	Primary Antibodies
Applications:	WB
Recommended Dilution:	WB: 1:5000~1:10000
Reactivity:	Human, Pig
Host:	Rabbit
Isotype:	IgG
Clonality:	Polyclonal
Immunogen:	Synthetic peptide, corresponding to Human Rev-Erba.
Specificity:	Rev-Erba polyclonal antibody detects endogenous levels of Rev-Erba protein.
Formulation:	Rabbit IgG, 1mg/ml in PBS with 0.02% sodium azide, 50% glycerol, pH7.2
Concentration:	1mg/ml
Conjugation:	Unconjugated
Storage:	Store at 4°C short term. Aliquot and store at -20°C long term. Avoid freeze-thaw cycles.
Stability:	1 year
Predicted Protein Size:	~ 78 kDa
Gene Name:	nuclear receptor subfamily 1 group D member 1
Database Link:	Entrez Gene 9572 Human P20393

[View online »](#)

Background:

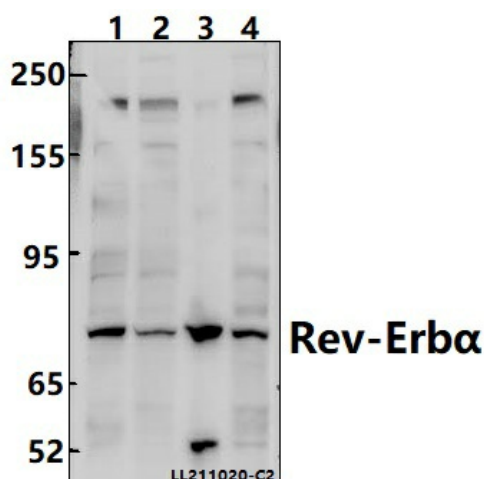
Reverse orientation c-erbA gene α (Rev-erb α , EAR-1, or NR1D1) is a widely expressed member of the orphan nuclear receptor family of proteins. Rev-erb α is highly expressed in adipose tissue, skeletal muscle, brain and liver, and regulates cellular proliferation and differentiation. Expression increases during differentiation in adipocytes and ectopic expression of Rev-erb α potentiates the adipocyte differentiation of 3T3-L1 cells. In addition, expression oscillates with circadian rhythm in liver cells and Rev-erb α regulates expression of BMAL1, ApoA-I and ApoC-III, all key regulators of circadian rhythm. Phosphorylation of Rev-erb α Ser55 and Ser59 by GSK-3 β appears to stabilize Rev-erb α protein levels and is important for synchronizing and maintaining the circadian clock. Rev-erb α also regulates inflammation by targeting the NF- κ B responsive genes IL-6 and COX-2. Rev-erb α lacks the activation function 2 domain required for ligand-dependent activation of transcription by other members of the nuclear receptor family; thus it behaves as a constitutive repressor protein, recruiting the nuclear receptor co-repressor (N-CoR)/HDAC3 complex to target genes to repress transcription.

Synonyms:

EAR-1; Nuclear receptor subfamily 1 group D member 1; Rev-erbA-alpha; V-erbA-related protein 1

Note:

For research use only, not for use in diagnostic procedure.

Product images:


Western blot (WB) analysis of Rev-Erb α polyclonal antibody at 1:10000 dilution Lane1:U-87MG whole cell lysate(40ug) Lane2:A549 whole cell lysate(40ug) Lane3:The Lung tissue lysate of Pig(40ug) Lane4:HepG2 whole cell lysate(40ug)